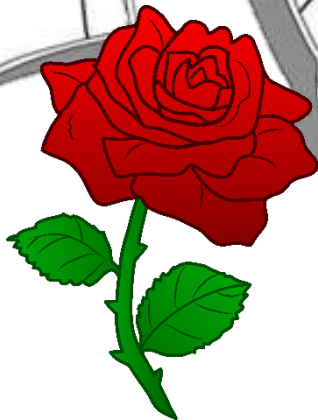
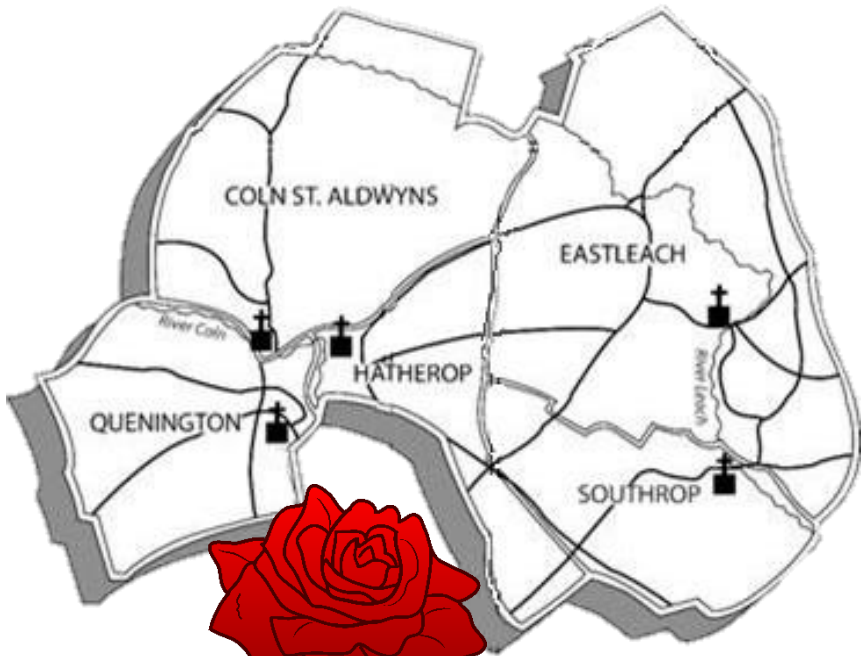


# CHEQS MAGAZINE



**June 2023**

# COTSWOLD TREES

*Professional Tree Surgery - over 21 years' experience*

- Conservation Area and Tree Preservation applications
- all aspects of tree surgery, including
  - veteran tree management
  - crown reductions
  - fruit trees
  - thinning & lifting
  - stump removal
  - custom shaping
- trained & qualified with NPTC and Ancient Tree Forum
- fully insured

Call Wayne for a free quote, or further information  
OFFICE: 01285 750082      MOBILE: 07479 464292

## TV Problems? Poor Picture?

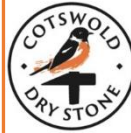
Call **AARDVARK**   
**INSTALLATIONS**

website: [www.aardvarkinstallations.co.uk](http://www.aardvarkinstallations.co.uk)

- New TV Aerials • Freesat & Sky Installations
- Extra TV Points Fitted • Domestic Electrician
- Set-up and Installation of Equipment
- Broadband, Wi-Fi & Networking • CCTV Installations



01285 800 041 Email [aardvark@alpens.co.uk](mailto:aardvark@alpens.co.uk)



## TRADITIONAL DRY STONE WALLING

[www.cotswolddrystone.com](http://www.cotswolddrystone.com)

- new walls, wall repairs and rebuilds
  - retaining walls & mortared walls
  - garden features & patios
  - wall maintenance & ivy removal
- no job too small**

contact Joe: 07799877122

email: [info@cotswolddrystone.com](mailto:info@cotswolddrystone.com)



## COTSWOLD PROPERTY

### Country house renovation and refurbishment

01451 509380

[www.cotswold-property.com](http://www.cotswold-property.com)

*Hello from...  
... Kate Holland*



I grew up in Gloucester, and I lived in Buckinghamshire for a few years whilst working at Pinewood Studios and my husband was away training with the RAF. After a few more house moves, we decided to settle in Southrop with our three children. My eldest daughter was starting secondary school - this was seven years ago now.

Southrop is a beautiful village, and I love the community here. I feel very lucky that we have lots going on and great people around us. I run fitness classes in the area and I am passionate about staying active and encouraging others to be active. I am also on the PTA at Southrop School and enjoy planning events.

I recently started a new job working within Cotswold District Council's Community Wellbeing Team as a Community Builder - along with my colleague, Sue Pilling. By engaging with people, we aim to help residents feel more connected to their local communities. We support those who also want to enhance their communities, helping them to bring about people-led action. Everyone in a community has something to offer and evidence tells us that strong communities help reduce social inequalities, improve personal wellbeing, reduce isolation and loneliness, and can help the whole community thrive. This is something I feel very strongly about.

The Cotswolds is a fantastic place to live, with so many assets. In my working role, I aim to help people identify all that is great about where they live, and to help them use that knowledge to build a better life. It is such a rewarding job!

If you would like to meet with myself and Sue, and also your local Police Community Support Officer, for more information on what we do, and to share your ideas for your community (that's all of the CHEQS villages), then please come along to the afternoon tea:

**'Community Wellbeing Afternoon Tea' on MONDAY 19<sup>TH</sup> JUNE, 1.30-3.30pm at Eastleach Village Hall for free tea, cake and conversation ☺**

**CHEQS Magazine** is a free monthly community publication, funded by its advertisers, and delivered by volunteers to about 800 homes in Coln St Aldwyns, Hatherop, Eastleach, Quenington & Southrop.

**Current & back-copies of the magazine are available online at:**

<https://cheqs.weebly.com/cheqs-magazine.html>

Contributions are welcomed **by the 15<sup>th</sup> of the previous month.**

They may be edited, and will be included at the editor's discretion.

Contact details for the editor, Margaret Stranks, are: [cheqsmagazine@gmail.com](mailto:cheqsmagazine@gmail.com)

01285 750402 or 07729 129578      3 Old Orchard Court, Coneygar Road, Quenington

## A THANK YOU

*Lucy Abel Smith, of Quenington Old Rectory, writes:* In spite of the weather and the



loss of three of the exhibitors, the Rare Plant Fair held at the Old Rectory, Quenington, was a successful fundraiser for the medical charity, Cobalt. The charity was established in 1964, with the key

goal to deliver improvements in clinical diagnosis and treatments, and to help people affected by cancer, dementia and other conditions. Each year, Cobalt provides diagnostic imaging for over 130,000 patients from their imaging centres in Cheltenham and Birmingham, as well as offering mobile MRI, CT and PET/CT scanners that support NHS hospitals and other medical facilities across the UK.

Cobalt volunteers produced and sold wonderful food and drinks in the Pool House on the day of the Rare Plant Fair, and the takings, along with a donation of 50% of the Fair entry ticket price, came to an amazing £4,000. This money will help the charity to invest in the latest diagnostic scanners to support the diagnosis of cancer and early on-set dementia at the Imaging Centre in Cheltenham.

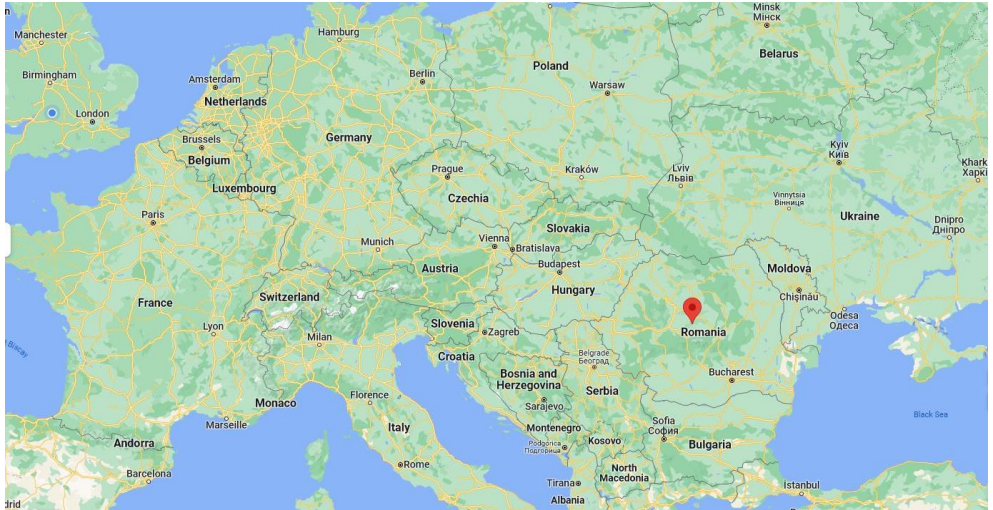
Thanks to everyone who came, and to those who tolerated the parking on the Green. A special thank you to the Quenington Old Rectory team, who put out the tent, chairs, tables and signage for the day.

## A STORY FROM THE WAR IN UKRAINE

**with a local connection**

*Lucy Abel Smith writes:* My husband's brother, Christopher, has long lived in both Russia and Ukraine. The day this unforgivable invasion started, Christopher sent a photograph of one of the drones over his garden. Eight months on, after incessant bombing - and encouraged by the arrival of the Wagner Group\* in Kherson - Christopher, his Ukrainian partner, Natasha, her mother (Valentina), and three large dogs made their way from the island where they had built a house, over the Dnipro River (which is mined by the Russians) to pick up transport to Odessa and drive to Constanta in Romania. From there it is a 9-hour drive to my house in Richiș in

Transylvania. I went to meet them. The next day, they heard that their 80-year-old neighbours, who were actually pro-Russian, had been shot by the Wagner Group.



The Romanians have been most welcoming to their Ukrainian neighbours and I discovered that there were Ukrainians living opposite our house in Richiș - a good start. Funding however, will be a problem - Christopher and Natasha had lost practically everything. The EU have been supporting refugees with funding towards energy usage and essentials such as food and other necessities, but unfortunately this was due to stop at the end of April. Natasha and Valentina (who is 80 and speaks not a word of anything except Russian and Ukrainian), received refugee status. My brother-in-law does not qualify. They have all decided to stay in Romania.

In the meantime, in order to obtain some money for them, I had to prove that I own the property, and that I vouch for my refugees. At first, I scanned everything and sent it to the town hall in Biertan, near to Richiș. No good, I learnt - I had to appear in person with the papers in hand. As I am a foreigner, I also had to arrive at the town hall to pick up cash for the electrics, gas and provisions.

As I write the family are looking for a house to rent until they find one which they can buy, with land for the dogs. Then, of course, they have to find something to do.

\*[Editor - Wikipedia (edited): The **Wagner Group** is a Russian paramilitary organization. Wagner operatives have committed war crimes in areas where they are deployed. Because it operates in support of Russian interests, receives military equipment from the Russian Ministry of Defence, and uses MoD installations for training, the Wagner Group is frequently considered a de facto unit of the MoD or Russia's military intelligence agency.]

## PENTECOST WALK FROM FAIRFORD TO QUENINGTON

Sunday, 28<sup>th</sup> May from 3pm

To celebrate the coming of the Holy Spirit and the connection with the environment, all are welcome to join with walkers from the South Cotswold Team Ministry. The walkers will leave St Mary's Church, Fairford, at 3pm and walk to Quenington (approx. 3 miles) with pauses on the way for readings/reflection. There will be a shared picnic tea (biscuits & cakes) at St Swithin's church, Quenington, at about 4.30pm, followed by a Taizé Service at St Swithins at 5.30pm.

Non-walkers are welcome to come for tea and the service at Quenington (and possibly give a walker a lift back to Fairford?). All are welcome - no need to be a churchgoer. More info: [janeykidd@gmail.com](mailto:janeykidd@gmail.com) and [clarebrignall@hotmail.com](mailto:clarebrignall@hotmail.com)

## EASTLEACH FROLICS

Monday, 29<sup>th</sup> May from 11.30am onwards, starting at the playing field

The fun and frolics continue all afternoon, culminating in the regatta of home-made model boats (or water craft of a variety of descriptions!) followed by the tug-of-war in the River Leach. Get busy making your boats, and try to win the prizes – for race winners and for the best-looking boat. £1 entry fee, and it is open to all ages. For more information, see poster p.19 or contact Dylan ([dylan-jones93@hotmail.com](mailto:dylan-jones93@hotmail.com)).

## CHEQS CORONATION CELEBRATIONS



It seems like the villages had a good time getting together for their community Coronation celebrations, in spite of the weather on the Coronation Day itself!

Many thanks to **all those in each of the villages** who organised and advertised, donated raffle prizes, baked cakes, knitted, ran craft tents, provided music or games, rang bells, hung flags and bunting,

shared food and drink, moved chairs and tables, chatted, attended or otherwise helped everyone to have a good time together.

# St John the Baptist Church, Coln St Aldwyns on Coronation Day



## Hatherop's celebrations





Southrop Coronation meal



[Sorry not to be able to include more photos of all the events!]

Quenington community picnic



Eastleach – tree planting and blessing...



... and celebrations in the village hall.







## **EASTLEACH & SOUTHROP FRIENDSHIP CIRCLE**

**Thursday, 1<sup>st</sup> June at 3pm, Southrop Village Hall**

This month's activity is a **talk by Lynda Warren**. Contact Jane Jenkinson 01367 850393 or Caroline Simmons 01367 850171 for more information. Annual membership is £5, plus £2 per meeting.

## **FAIRFORD ART SOCIETY**

**Thursday, 1<sup>st</sup> June at 7.30pm, Fairford Community Centre**

The demonstrator is John Scott Martin who will be working in mixed media. Members £2. Visitors welcome £4.

The first 'plein air' meeting is on 6<sup>th</sup> June.

Members will be taking part in the Annual Exhibition as part of the Fairford Festival on the 10<sup>th</sup> and 11<sup>th</sup> June at the Community Centre.

For more information, contact Sallie Seymour: 01367 850385.



## **EVERYONE IS CORDIALLY INVITED TO A VICARAGE TEA PARTY**

**Friday, 2<sup>nd</sup> June from 2.30 – 4.30pm, at The Vicarage, Coln St Aldwys**

The tea party is being held in aid of the Trussell Trust, the charity which supports food banks throughout the country, and campaigns to change conditions in our country, so that food banks are no longer needed.



## **OPEN GARDENS**

**Sunday, 4<sup>th</sup> June from 2 – 6pm, Oxleaze Farm**

The garden at Oxleaze Farm (GL7 3RB) will be open in aid of the National Garden Scheme – teas available. For a preview see 10<sup>th</sup> May edition of Country Life!

**Sunday, 25<sup>th</sup> June from 2 – 5pm, Coln St Denis**

Two gardens in Coln St Denis - The Manor and Pindrup House - will be open in aid of MindSong. Entry and teas by donation. Parking at The Manor GL54 3JU.

## **COLN ST ALDWYNS, HATHEROP & QUENINGTON**

**Sunday, 4<sup>th</sup> June from 4 – 5.30pm, Quenington Village Hall**



The theme this month is the next part of the story of Moses. All are welcome, and a meal is included.

For more information: [heatherwalker39@hotmail.co.uk](mailto:heatherwalker39@hotmail.co.uk)



## TWO MORE OPEN GARDENS, IN AID OF... FRIENDS OF FAIRFORD & LECHLADE COMMUNITIES

A fine selection of tea and homemade cakes will be available at both gardens. Gates will be open from 2 – 6pm, £7 entry. [www.friendsoffairford.org.uk](http://www.friendsoffairford.org.uk)

**Sunday, 4<sup>th</sup> June – Langford Downs Farm, Southrop**

**Sunday, 25<sup>th</sup> June – Ryton House, Lechlade**

## QUENINGTON VILLAGE HALL - 100 CLUB - MAY PRIZES

1<sup>st</sup> prize £15: No.18 Caroline de Beaufort-Suchlick; 2<sup>nd</sup> prize £10: No.3 Joan Sewell

## LECHLADE GARDENING CLUB



The June meetings are a trip to Mottisfont Rose Garden on 8<sup>th</sup> June, and a Summer Social with drinks in members' gardens.

For more information, contact: Neal Cotton (Chair) 01367 252495 or Barbara McNaught (Secretary) 01367 252286.

## **Book now for the trip to The Laskett garden, Much Birch, Herefordshire Thursday, 6<sup>th</sup> July**

Over four decades Sir Roy Strong and his wife, Julia Trevelyan Oman, transformed a four-acre field into a series of stunning garden rooms and vistas. Set on the Herefordshire and Welsh borders, the gardens reflect the personality of two people and their equally famous acquaintances at the centre of the arts in the latter half of the twentieth century. Acclaimed to be one of the most remarkable and inspirational gardens in England, it was donated by Sir Roy to Perennial, a garden charity, and it is now maintained by them. The overall formal structure of hedges, topiary, statues, and colonnades has been softened with informal underplanting and extensive herbaceous borders. A very different garden.

On our way to The Laskett we will be calling at The Three Shires Garden Centre for refreshments/lunch in their restaurant overlooking the lake. There are toilets at The Laskett, but no refreshments.

**Cost** £25 includes coach and entry to The Laskett.

**Depart Lechlade 9.30am** Oak St (opposite Jubilee Hall Antiques) 9.30am - park in Memorial Hall Car Park

**Depart The Laskett 4.30pm** - arrive Lechlade 6pm approx.

Please send cheque payable to Lechlade Gardening Club or give cash to:

Audrey Barnes, 1 Roman Way, Lechlade GL7 3BS

[audreybarnes96@gmail.com](mailto:audreybarnes96@gmail.com) or 01367 242252

## DOG POO IN THE VILLAGES – AN UPDATE



*Alun Davies writes:* The Barking Mad team joined in with the villages' spring litter pick events to find out more about the local dog litter hot spots, and relay this back to the Parish Councils.



Both Southrop and Eastleach villages were relatively free of dog litter, mainly due to an on-going educational programme and particularly the 'livestock health' campaign undertaken at Eastleach. Quenington and Hatherop parish councils were both due to consider providing poo bags on bins around the village at their next meetings, and Coln St Aldwyns PC have decided to locate dog poo bag bins at certain locations around the village.



## FRIENDS OF FAIRFORD & LECHLADE COMMUNITIES LATEST NEWS AND EVENTS

### Menopause Matters

**Tuesday, 6<sup>th</sup> June at 7pm, Fairford Community Centre**

Come and hear a talk about the menopause, from David Griffiths, a senior consultant gynaecologist. This is a free event, and no booking is required.

### Volunteer Drivers Needed

We are seeking volunteers to help people get to their medical appointments. This is especially needed over the summer months - please do get in touch for a chat if you are interested or would like any more information: Val on [transport@friendsoffairford.org.uk](mailto:transport@friendsoffairford.org.uk) 07540 798226

### Charity Shop Update

We now have new opening hours:

Tuesday - Saturday 10am – 4pm (Sunday & Monday closed)

We have full shelves of excellent quality adults' and children's clothing, toys, books and much more. Our changing room has now reopened too, so try before you buy!

## FROM THE ERNEST COOK TRUST

The River Coln runs from its source at Brockhampton to where it joins the Thames, at Lechlade. An almost 3-mile stretch is at the heart of the Trust's Fairford Estate, from Fairford to just north of Quenington. Like most rivers, the Coln is not immune to the pressures placed upon the UK's water courses: from historic management and interventions, to abstraction, pollution and the gradual degradation of the habitat along the whole course of the river. Together with grant funding from our partners at the Farming and Wildlife Advisory Group (FWAG), we at the Trust have made a significant investment into a programme to restore an ecologically healthy and diverse catchment, within the bounds of our ownership.

At the end of 2022, we embarked on a large project along the 'New Stream' which runs through the water meadows between the Cascades and the Oxpens, towards Fairford. This channel was dug out in the 1980s and had become heavily shaded by dense vegetation - little light could get in, and the habitat was poor. The willow trees have now been pollarded, and the channel has been re-fenced on either side to ensure cattle cannot access the water. This will create a connecting habitat up the river, bypassing the Broadwater (the main river adjacent), which is very wide and slow flowing, resulting in heavy silting, making it unsuitable for a number of river species. We have surveyed the fish stocks in the New Stream, along with two other locations on the main river, and will re-survey in the future to assess the impact of our work. We were pleased that this first survey showed a prevalence of wild brown trout and grayling on the main river; a very positive result.



We undertake tree safety surveys across the estate, resulting in the removal of a number of trees, principally ash trees, due to ash dieback. Tree safety work will continue, as well as replanting. Other work will include ongoing bank repairs, habitat improvements, and renewing fencing. We also plan to install mains water into the meadows in order to remove cattle drinking points, which will help to reduce pollution and bank erosion.

If you would like to learn more, we will soon be running guided walks, to enable people to explore beyond the permissive footpath areas, and learn more about the wonderful habitat along the river. For more about this, please contact Karen Price our Communities Lead by emailing [karen.price@ernestcooktrust.org.uk](mailto:karen.price@ernestcooktrust.org.uk).

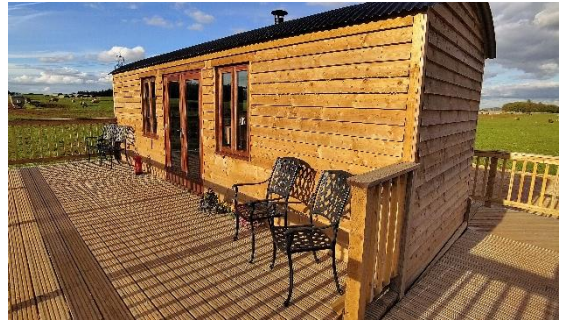
[The Ernest Cook Trust is a UK-wide educational charity which creates outdoor learning experiences for children, young people and their families, on its own estates and with partners across the country. The Trust's vision is for an environmentally engaged society with stronger connections with nature.]

# EASTLEACH DOWNS ORGANIC FARM

New accessible grass trails and wheelchair-accessible facilities are open on Fridays, Saturdays and Sundays



*Sam and Helen Wade write:* We've been growing organic food here on our tenanted farm for over 30 years, and now grow cereal and protein crops to feed our herd of free-range, organic British Saddleback pigs. We now have a new visitor centre for people to enjoy.



There is plenty for visitors to see, and they can also learn about the farm as it changes throughout the seasons. The new custom-built accessible 'shepherd's hut' is where visitors can enjoy self-service tea and cake, with a westerly view across the farm and towards the Cotswold landscape beyond. And it's also where you'll find displays of information about the farm. The car park and farm trails are free

to use, there's an accessible toilet near the hut, and also a Trampler all-terrain, electric mobility vehicle available to book (at no cost) Dogs on leads are welcome, as are groups of people.



Eastleach Downs Organic Farm  
Eastleach Downs  
Gloucestershire  
GL7 3PX  
What3Words: ///insurance.lilac.shopper

☎ 07854177961  
✉ helen@eastleachdowns.co.uk  
f eastleachdowns

## FAIRFORD TENNIS CLUB

*Cathy Sayers, Chair, writes:* It became apparent during the Bank Holiday Coronation celebrations that there's hidden talent out there. Walking through Fairford and Quenington, with people out enjoying a glass, when asked if anyone played tennis, many of you replied, "Yes, but a long time ago!" The next question being, "Would you like to reinvigorate those skills?" and the answer was generally, "Yes, please!" Such a positive response to the idea of joining a tennis club.



Fairford Tennis Club originated as grass courts in the town, on Hatherop Road, in the 1920's. It then moved to Sir Henry Darlington's house in Fairford in 1929, and by 1950 he helped build new courts at The Walnut Tree Field, on a site rented from The Ernest Cook Trust. The latest resurfacing last

winter has given the courts a great playing surface, where social, beginners, juniors and competitive tennis takes place throughout the year.



We welcome all new members - and indeed, generous benefactors! We have a hut which *could* be transformed into a pavilion, we have lights for evening play which *could* be converted to LED, and our plumbing *could* do with an upgrade. All of this is possible for a lovely local club. Do join up, we offer something for everyone.

FTC website: <https://clubspark.lta.org.uk/FairfordTennisClub>  
For enquiries please email: [fairfordtennisclubmembership@gmail.com](mailto:fairfordtennisclubmembership@gmail.com)



# VILLAGE CONTACTS

## PARISH COUNCILS

**Coln St Aldwyns** (website [www.colnstaldwyns.com/council.html](http://www.colnstaldwyns.com/council.html) )

Chair: David Hicks Beach 01285 750482

Clerk: Clare Brignall 01285 752662 [colnsaparishclerk@gmail.com](mailto:colnsaparishclerk@gmail.com)

**Hatherop** (website [www.hatheroppc.com/](http://www.hatheroppc.com/) )

Chair: James Hart

[hatheropparishcouncil@gmail.com](mailto:hatheropparishcouncil@gmail.com)

Clerk: Jacky Sykes

as above

**Eastleach** (website [www.eastleachparishcouncil.org](http://www.eastleachparishcouncil.org) )

Chair: Miranda Lawson

[miranda@eastleachparishcouncil.org](mailto:miranda@eastleachparishcouncil.org)

Locum Clerk: Vanessa Lawrence 07876 252398

[clerk@eastleachparishcouncil.org](mailto:clerk@eastleachparishcouncil.org)

**Quenington** (website [www.queningtonvillage.uk](http://www.queningtonvillage.uk) )

Chair: Mike Scott 01285 750433

Clerk: Rita Walsh 01285 750000

[queningtonpc@gmail.com](mailto:queningtonpc@gmail.com)

**Southrop** (website [www.southrop.org.uk](http://www.southrop.org.uk) )

Chair: Tim Guest 01367 850189

Clerk: Vanessa Lawrence 07876 252398

[spcclerk2017@outlook.com](mailto:spcclerk2017@outlook.com)

## VILLAGE HALLS

**Eastleach** [eastleachvhall@gmail.com](mailto:eastleachvhall@gmail.com)

**Quenington** [www.queningtonvillage.uk](http://www.queningtonvillage.uk)

[queningtonvillagehall@gmail.com](mailto:queningtonvillagehall@gmail.com)

**Southrop** Caroline Simmons 01367 850171

[southropvillagehall@gmail.com](mailto:southropvillagehall@gmail.com)

**Jubilee Close** Andy Howarth 01367 850400



## SCHOOLS

**Hatherop C/E Primary School** (Taryn Hancock)

[admin@hatherop.gloucs.sch.uk](mailto:admin@hatherop.gloucs.sch.uk) 01285 750318

**Southrop C/E Primary School** (Megan Davies & Julia McLellan)

[admin@southrop.gloucs.sch.uk](mailto:admin@southrop.gloucs.sch.uk) 01367 850246

**Hatherop Castle School** (Nigel Reed)

[admissions@hatheropcastle.co.uk](mailto:admissions@hatheropcastle.co.uk) 01285 750206

## OTHER VILLAGE COMMUNITY GROUPS

### S & E Friendship Circle

Jane Jenkinson 01367 850393 or Caroline Simmons 01367 850171

**Quenington Baby & Toddler Group (CHEQS+)** Term time Mondays – book weekly, in the preceding week [margaret.stranks@gmail.com](mailto:margaret.stranks@gmail.com) 07729 129578 (WhatsApp preferred)

# COLN COMMUNITY STORES

[www.colnstores.co.uk](http://www.colnstores.co.uk)

or 01285 750294



	Shop	Café	Post Office*
Monday – Friday	8am – 4.30pm	8am – 3.30pm	9 – 12.30pm & 1.30 – 4pm
Saturday	8am – 2pm	8am – 1pm	9 – 11.30am
Sunday	9am – 1pm	9am – 12pm	CLOSED
<b>Monday, 29<sup>th</sup> May</b>	9am – 1pm	9am – 12pm	CLOSED

\*NB the collection from the post box outside the Stores is at 4pm Monday – Friday



## SOUTHROP SHOP, POST OFFICE & COFFEE MORNING



Wednesdays 8.45 - 11.30am – check out Facebook for updated information.

## LLOYDS BANK MOBILE UNIT

The mobile bank may be in High Street, Fairford – dates unavailable at time of print. To check on the day, call the mobile branch hotline on [0345 601 6943](tel:03456016943).



## NEIGHBOURHOOD WATCH

The CHEQS representative: Marion Crawford [mazcrawford@hotmail.com](mailto:mazcrawford@hotmail.com)

## CHEQS DIARY 2023

Thurs 1 <sup>st</sup> June	3pm	Friendship Circle, Southrop Village Hall	p7
Thurs 1 <sup>st</sup> June	7.30pm	Fairford Art Society	p7
Fri 2 <sup>nd</sup> June	2.30 – 4.30pm	Vicarage Tea Party, Coln St Aldwyns' vicarage	p7
Sun 4 <sup>th</sup> June	2 – 6pm	Open Garden – Oxleaze Farm	p7
Sun 4 <sup>th</sup> June	2 – 6pm	Open Garden – Langford Downs Farm Southrop	p8
Sun 4 <sup>th</sup> June	4 – 5.30pm	Messy Church, Quenington Village Hall	p7
Tues 6 <sup>th</sup> June	7pm	Menopause talk - Fairford Community Centre	p9
9 <sup>th</sup> – 10 <sup>th</sup> June		Fairford Festival, inc. Book Fest	p18
Sat 10 <sup>th</sup> June	10.30 – 11.45am	Coffee Morning, Quenington Village Hall	p17
Sat 10 <sup>th</sup> June		Repair Cafés	p18
Sat 10 <sup>th</sup> June	1 – 4pm	Southrop Fete	p21
Sat 10 <sup>th</sup> June	6 for 6.30pm	Coln Choir, Hatherop Castle School	p20
Sun 18 <sup>th</sup> June	8.30am	Quenington Car Boot Sale, village green	p24
Sun 18 <sup>th</sup> June	8.30am – 12.30pm	Quenington Craft Fair, village hall	p24
Mon 19 <sup>th</sup> June	1.30 – 3.30pm	Community Wellbeing Afternoon Tea, Eastleach	p1
Sat 1 <sup>st</sup> July	from 5.30pm	Swing Band Picnic, The Mill House lawn, Coln	p25



## CHURCH SERVICES



### CHEQS CHURCHES:

#### Coln, Hatherop & Quenington

4 <sup>th</sup> June	10.30am 4pm	Holy Communion Messy Church	St Swithin's, Quenington Quenington Village Hall
11 <sup>th</sup> June	10.30am	Holy Communion BCP	St John the Baptist, Coln
18 <sup>th</sup> June	10.30am	Holy Communion	St Swithin's, Quenington
25 <sup>th</sup> June	10.30 am 6pm	Family Service 'Hymns & Pimms'	St Nicholas, Hatherop the Vicarage garden, Coln

#### St Andrew's Church, Eastleach

4 <sup>th</sup> June	11am	Matins with Neal Cotton
11 <sup>th</sup> June	11am	Holy Communion with Gareth Griffith
18 <sup>th</sup> June	11am	Matins with Gordon Land
25 <sup>th</sup> June	11am	Matins with Gordon Land

#### St Peter's Church, Southrop

4 <sup>th</sup> June	9.30am	Holy Communion
11 <sup>th</sup> June	9.30am	Morning Prayer
18 <sup>th</sup> June	9.30am	Morning Prayer
25 <sup>th</sup> June	6pm	Evensong

**Williamstrip Chapel:** Mass is usually celebrated on Sundays at 9.30am

### FAIRFORD & LECHLADE CHURCHES:

Check out the church websites for more information.

**RC Church of St Thomas of Canterbury**, Horcott Road, Fairford

Mass is usually held on Saturday 10am & 6pm, Sunday 11am, Wednesday 6.30pm, and Thursday 10am, but please check [the latest Newsletter](#) online before setting out.

**Fairford United Church** Milton Street, Fairford

Sunday service is at 10.30am.

**St Lawrence Church**, Market Place, Lechlade

Sunday services at 8am, 10am & 5pm, and Thursdays at 10am.



# CHURCH CONTACTS

## COLN ST ALDWYNS, HATHEROP & QUENINGTON CLERGY

Rev Simon Brignall      The Vicarage, Church Lane, Coln St Aldwyns GL7 5AG  
(Thu, Fri, Sat, Sun)      01285 752662      [chqvicar@gmail.com](mailto:chqvicar@gmail.com)

## EASTLEACH & SOUTHPROP CLERGY

Rev Andrew Cinnamond      The Vicarage, Sherborne Street, Lechlade GL7 3AH  
(day off Tuesday)      01367 253651      [vicar@stlawrencelechlade.org.uk](mailto:vicar@stlawrencelechlade.org.uk)  
Gordon Land      01367 252050      [walreader44@gmail.com](mailto:walreader44@gmail.com)  
(Lead Minister for Eastleach)

## C of E CHURCH WARDENS

CHQ      James Sweeting [jdfsweeting@gmail.com](mailto:jdfsweeting@gmail.com) David Hicks Beach 01285 750482  
Eastleach      Tim Lawson 01367 850756 or 07855 264360 [timglawson@me.com](mailto:timglawson@me.com)  
Southrop      Jerry Hibbert 07766 084051      [jerry@hibbertralph.com](mailto:jerry@hibbertralph.com)

## C of E SAFEGUARDING OFFICER

CHQ      Edwina Hicks 07970 799270 [chqsafeguarding@gmail.com](mailto:chqsafeguarding@gmail.com)  
Eastleach      Lesley Uzzell Parish Office 01367 358653 or email  
   [Safeguarding@stlawrencelechlade.org.uk](mailto:Safeguarding@stlawrencelechlade.org.uk)  
Southrop      Rhona Reid 01367 850295

## C of E YOUTH WORKER

CHEQS & beyond      Chris Saunders 07918 732040 [saundersc2014@gmail.com](mailto:saundersc2014@gmail.com)

## CATHOLIC PARISH PRIEST

Father Michael Robertson 01285 712586 [michael.robertson@cliftondiocese.com](mailto:michael.robertson@cliftondiocese.com)

## WILLIAMSTRIP CHAPEL CHAPLAIN

Rev J Felix Stephens OSB 01285 740374 [jfs.osb@ampleforth.org.uk](mailto:jfs.osb@ampleforth.org.uk)

## FAIRFORD UNITED CHURCH

Rev Wendy Tucker 01285 653655      Secretary: Rachel Emmerson 01451 844532

## OTHER INFORMATION

**HOSPITALS** Fairford: out-patients only 0300 421 6470      Cirencester 0300 421 6200

**SURGERIES** Hilary Cottage, Fairford 01285 712377      Lechlade Medical Centre 01367 252264

**PHARMACIES** Boots, Fairford 01285 712350,      Lechlade Pharmacy 01367 252285

**GCC COMMUNITY WELL-BEING SERVICE** 01452 528491

**WORKING for WELLBEING** 07555 738138 contact the coordinator for groups, info & help

**POLICE** non-emergency: phone 101 or email [101@gloucestershire.police.uk](mailto:101@gloucestershire.police.uk)

**Quenington Defibrillator** Located outside Quenington Village Hall - for use by anyone in emergency, but ALWAYS RING 999 FIRST!

PLEASE LET THE EDITOR KNOW IF THE TIMETABLE NEEDS UPDATING (updated April 2021)

**Bus Service 76** Mon, Tue, Thu: Southrop 09:16, Eastleach 09:24, Hatherop 09:30, Quenington 09:37 to Fairford & Cirencester. Return leaves Cirencester at 12:40 and Fairford at 13:28. Sat: **S** 09:47, **E** 09:54, **H** 10:00, **Q** 10:07, **F** 10:15 Return leaves Ciren 14:20 Fairford 15:05

**Community Connexions Community Bus** book in advance on 03456 805029 for the door-to-door service on Thursdays to Cirencester; free with a bus pass or £8 each way



Eco tip: A small reminder about saving water. It may seem unnecessary, after the cool, wet spring, but it only takes a few weeks of hot, dry weather to reduce the amount stored in reservoirs. Often taken for granted, water is one of the essentials of life. However, some people have to walk miles each day to collect water. Check out information from WaterAid to find out more.

## PUT 'COMMUNITY' BACK INTO COLN COMMUNITY STORES!

*Manager, Philip Dance, writes:* During the Covid pandemic, we drastically reduced the numbers of people working in the stores. Since then, we've been able to use more volunteers, and we are now looking to the community to help increase our team even further. The volunteer shift times (some of which are covered by our existing volunteers) are: mornings (Monday to Friday, 9am to 1pm), afternoons (Monday to Friday 1 - 3pm **or** 3 to 4.30pm).

Do come and visit us to see if this is something that you might enjoy, and to see if there is a convenient slot for you... we are very flexible! We're asking for a commitment of **one morning or afternoon volunteer shift each week**. We'll provide training and support throughout the shifts.

Working as a volunteer at Coln Community Store will give you the opportunity to meet and talk with a broad range of people within our community and beyond, and help us ensure the longevity and availability of an essential facility.

To find out more, or to offer your help, do get in touch: [manager@colnstores.co.uk](mailto:manager@colnstores.co.uk)

## QUENINGTON VILLAGE HALL COFFEE MORNING

**Saturday, 10<sup>th</sup> June from 10.30 – 11.45am**

You can chat to neighbours, meet new people (perhaps!) and enjoy **free hot drinks and home-made cakes**.



*Treasurer, Ray Sheldon, writes:* This month's charity is ourselves, Quenington Village Hall! The Hall will be closed during this August whilst we completely refurbish the Hall kitchen. This work is long overdue and will provide the Hall with a modern hygienic kitchen facility for the benefit of all Hall users for many years to come. The budget expenditure of £30,000 will be covered by the Hall's financial reserves, however financial contributions/donations to help towards these costs would be most welcome. You can donate at the coffee morning or if you are unable to attend perhaps a BACS payment to Quenington Village Hall, Sort Code 30-92-06, Account No. 01209610 referenced 'Kitchen'. Details of the work being carried out will be available to view at the coffee morning. Please support your local Community Hall.

# DEFIBRILLATOR FOR HATHEROP

From the Parish Council website: Thanks to the kindness and generosity of the Lipscombe family, and in memory of Clare Lipscombe, Hatherop now has its own defibrillator. This is situated in the covered village notice board enclosure. Thanks too to the Fairford Lions, who helped with the installation and training in the machine's use. Many villagers attended the training sessions, however, the machine itself will guide users through the process, and is easy to follow. Further thanks go to the Hart family who are providing power to the unit. Hopefully it will never be needed, but it is a comfort to know it is available whenever it may be required.



## REPAIR CAFÉS Saturday, 10<sup>th</sup> June

**Lechlade Repair Café:**  
Lechlade Pavilion Hall,  
9.30am – 12.30pm

**Cirencester Repair Café:**  
Cirencester Baptist Church,  
10am – 1.30pm

CIRENCESTER  
**REPAIR CAFE**

We can try to mend toys, clothes, small electricals, household items and bikes

14TH JAN, 11TH FEB, 11TH MARCH,  
8TH APRIL, 10AM – 1.30PM

CIRENCESTER BAPTIST CHURCH,  
CHESTERTON LANE, CIRENCESTER,  
GL7 1YE

0752 667 6822 or facebook.com/cirencesterrepaircafe  
for further information

friends of the earth  
the change network

WELCOME TO  
**LECHLADE Repair Cafe**

Throw It Away? No Way!!

We meet the 2nd Saturday of the month  
9.30 to 12.30pm  
In the Lechlade Pavilion Hall  
Oak Street GL7 3AY

2023 dates  
14th January, 11th February, 11th March,  
8th April, 13th May, 10th June

Our volunteer repairers will try to repair your portable household appliances & items:  
Kettles, toasters, hairdryers, carpet & vacuum cleaners, TV's, radios, laptops, PC's,  
Sewing/textile repairs, Toys to bicycles.  
We will give it a go.

For further information contact:  
email: lechlade.repaircafe@gmail.com  
or call: 07554 230123

## FAIRFORD FESTIVAL - INCLUDING BOOK FEST 9<sup>th</sup> to 11<sup>th</sup> June, Fairford Cricket Club, Park Street, Fairford

**BOOK FEST**  
|| at Fairford Festival ||

Sponsored by **DCO SYSTEMS**  
RESEARCH CONTROL OPTIMISE

The Book Fest is being held in the Literary Marquee in the grounds of Fairford Cricket Club and has its very own book shop in a small marquee adjacent to the Literary Marquee. The Book Shop – new for this year – is being offered to enable book lovers to buy the authors' books and have them signed.

### Friday, 9<sup>th</sup> June

Children's authors and illustrators: **Jo Empson** at 4pm and **Steve Antony** at 5pm delighting their young audience with the wonderful stories, illustrations and characters in their top selling books. Children will also be able to enjoy a creative workshop and draw-along with the celebrated authors.

## Saturday, 10<sup>th</sup> June

Starting at 9.45am with pupils from Fairford Primary School reading short extracts from their favourite books

10am **Emma Reeves** – screen and stage script adaptations – interviewed by Yr 10 Media student, Isla Beadnell from Farmor’s School

11.15am **Sandra Howard** – Former Vogue model, journalist and fiction writer

12.30pm **Anne de Courcy** – Journalist and biographer of people such as Lord Snowdon

1.45pm **Dr Michael McCarthy** – Historian and writer about the real Dick Whittington

3pm **Paul Martin** – Antiques expert and TV personality – recently featuring in the Channel 5 series The Great Auction Showdown

4.15pm **Jessica Fellowes** – Journalist, author and niece of Downton Abbey creator, Julian Fellowes and an expert on Downton in her own right – interview by Chris Roberts with help from the audience

5.30pm **Dom Joly** – Comedian and travel writer – interviewed by Steve Knibbs, Gloucestershire reporter for BBC Points West

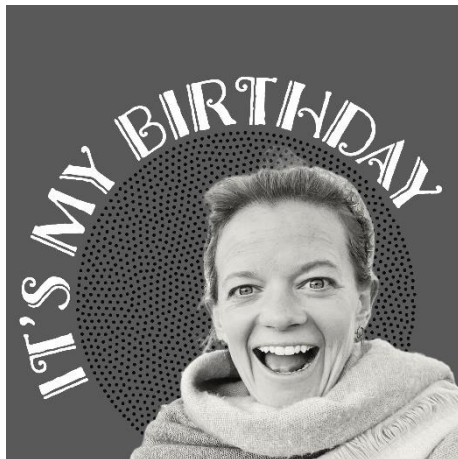
Tickets are available from 7a Coffee Shop, Fairford Primary School and online at Eventbrite (search Fairford Festival Book Fest) and cost:

£4 per child per author with adults free for the Friday Book Fest.

£10 for an all-day pop-in and pop-out ticket for adults and children over 10.

For more information, please contact: Chris Roberts on 0744 350 0744

[chrisrobertsmbe@gmail.com](mailto:chrisrobertsmbe@gmail.com).





# coln+ choir

## Musical Evening

Hatherop Castle School  
Performing Arts Centre

**Saturday 10<sup>th</sup> June**  
**at 6.30pm**  
(doors open at 6.00pm)

Performances by Coln Choir and Guests

Tickets available on the door  
or in advance from  
[mandyrambaut@gmail.com](mailto:mandyrambaut@gmail.com)

Adults £10.00 Children aged 16 or under £5.00

Refreshments to be served after the concert  
(by donation)

proceeds to local charities



SOUTHROP  
VILLAGE FÊTE  
SAT 10TH JUNE



ROYAL AIR FORCE **FALCONS**  
Parachute Display Team

AND

 **SPITFIRE FLYPAST**

**DOG SHOW • CLASSIC CARS • PIMM'S & ALE**

**£150 PRIZE DRAW • TRADITIONAL STALLS**

**SILENT AUCTION • ASSAULT COURSE • BBQ**

**VINTAGE STALL • BRIC A BRAC • STRAWBERRIES**

**TEA & CAKE • ICE CREAMS • COUNTRY DANCING**

**ADULTS £2, CHILDREN FREE • GATES OPEN 1PM-4PM**

**\* SUBJECT TO WEATHER CONDITIONS**



## NEWS FROM THE SCHOOLS



**Hatherop Church of England Primary School**

*Caring, Believing, Achieving*

website: <https://www.hatherop.gloucs.sch.uk/>



Recently, Skylark class visited Cogges Farm. They participated in lots of different activities and had a wonderful day out. Here is what the children had to say.

**Verity:** “At Cogges Farm we milked the pretend cow and saw the cute new baby chicks.” **Bea:** “My favourite part was seeing the pigs and rabbits. We made Welsh cakes in the shape of the giant’s footprint in the giant’s bedroom.” **George:** “We had a golden egg hunt at Cogges Farm.” **Rudy:** “I loved seeing the pigs.”

**Isaac:** “My best bit was stroking the goats.”



In order to raise funds towards their residential trip, Year 5 and 6 arranged a fun run with a difference. Wearing fancy dress, they all headed up to the field and, after some photos, set off to run laps. Well done to them all, some with very tricky costumes to run in!

To celebrate the coronation, the PTA arranged a whole school gathering, involving games for the children,

scones, tea and cake as well as a couple of songs sung by the children. It made for a great start to the coronation bank holiday weekend.

The creative art and science events that the children at Hatherop took part in last term were made possible due to a donation from the Quenington Sculpture Trust. We would like to thank them for their continued support in helping our children access such wonderful experiences.





## Southrop Church of England Primary School

*Together we can fly*

Website: [www.southrop.gloucs.sch.uk/](http://www.southrop.gloucs.sch.uk/)

Facebook page: [Southrop C of E Primary School](#)

The beginning of the summer term has been a time of great focus for our Year 6s as they prepared for the SATs tests, this year having to navigate around a lot of bank holidays! They took a little bit of a break to prepare a lovely afternoon tea to share with the rest of the school before we finished for the coronation weekend.



Reception and Year 1 also celebrated the Coronation at forest school, crafting crowns from willow and decorating them with flowers and leaves.

SATs week is always a surprisingly calm and enjoyable time. The Year 6s start the day



with a SATs breakfast in the nurture cabin and after their tests are finished spend some downtime working as a team on logic puzzles and doing photo-editing. This



involves skilful editing to put themselves as tiny people in some very imaginative places, for example sitting on a sunset cloud or swimming with a crocodile. Take a look at our website to see a slide show of their creations.

Some of our students submitted photographs to the Gloucestershire Young Photographer Competition 2023 and two photos made it through to be a part of the final display: "Orange You Glad I Entered?" by Téó and "Shadowy Silhouettes" by Oliver. We can see that photography is a craft that is readily accessible to our pupils in, and often out of school too, with the prevalence of tablets and phones, and that it offers them great creative opportunities. We are very grateful to Lisa, from Love Kids Photography, who is coming into school to run a photography club with the older children and we're looking forward to seeing the end results.

You can find lots of additional information and slideshows about the school on our website and Facebook page.

## QUENINGTON CAR BOOT SALE

Sunday, 18<sup>th</sup> June, Quenington Village Green



No need to book – you can set up from 8.30am (not before, please) and it's only £5 to sell. It's weather-dependent, so check the Facebook page if in doubt. Other dates: 9<sup>th</sup> July, (**not** in August), 3<sup>rd</sup> September, 1st October.

## QUENINGTON CRAFT FAIRS

Sunday, 18<sup>th</sup> June, from 8.30am to 12.30pm, Quenington Village Hall



Stallholders can set up from 7am. There are a few tables left for this event, so any local crafters who would like a stall, please contact Tracey: [tracey8173@icloud.com](mailto:tracey8173@icloud.com)

Free entry. Everyone is welcome to come and support local craft people: paintings, crocheted and knitted work, jewellery,

quilling, mosaics and wooden turned items - do come along and give your support. **Future dates:** 9<sup>th</sup> July, (**not** in August), and 3<sup>rd</sup> September.

### Justin Rundle

Painter & Decorator

07970 296579

[justinrundle@hotmail.com](mailto:justinrundle@hotmail.com)



Local & Trusted

## TheFamily Osteopath

11 High St, Fairford

[www.thefamilyosteopath.co.uk](http://www.thefamilyosteopath.co.uk)

07894 707745

## COME ALONG AND JOIN THE BIG SWING BAND PICNIC

**Saturday, 1<sup>st</sup> July picnic from 5.30pm, The Mill House, Coln St Aldwyns**

It's that time of year again, when our thoughts turn to balmy summer evening picnics by the river! The Big Band Picnic returns this year with an evening on the banks of the River Coln at the Mill House in Coln St Aldwyns (by courtesy of Earl St Aldwyn). The music will once again be provided by the Glosjazz Swing Band, which will play old favourites made famous by great bands such as the Glen Miller Orchestra and the Count Basie Band. The gates will open at 5.30pm for pre-concert picnics, hopefully in glorious sunshine, and the music will start at 6.30pm.



Proceeds from the event will once again be donated to the Friends of Fairford and Lechlade Communities – so make sure you come along and support your local hospital service - bring a group of friends with you to make it a really great evening!

Free parking will be available adjacent to the site and entry, payable at the gate, will be £10 for adults and £5 for children under 14.

So, come along, bring your own picnic and drink, and enjoy a great evening in aid of an important local charity!!

## COLN VILLAGE FETE – SAVE THE DATE

**Saturday, 2<sup>nd</sup> September**



The Coln St Aldwyns Children's Fete & CHEQS Produce Show is now confirmed for Saturday 2nd September and once again, by kind permission of Earl St Aldwyn, it will be held in the beautiful grounds of The Mill House. There will be delicious food, lots of children's games and entertainment, live music from The Ukey Dukes, stalls, afternoon teas and a bar. You won't want to miss it, so be sure to save the date. Our website is [colnfunday.com](http://colnfunday.com) and is the place to stay up to date with all the fete news.

## OTHER EVENTS COMING UP DURING THE SUMMER...

- Royal International Air Tattoo (RIAT): 14<sup>th</sup> to 16<sup>th</sup> July
- Glos. Vintage & Country Extravaganza (South Cerney airfield): 4<sup>th</sup> - 6<sup>th</sup> August
- Fairford Steam, Classic & Retro Show: 19<sup>th</sup> & 20<sup>th</sup> August



Don't forget, you can view CHEQS Magazine in full colour online: <https://cheqs.weebly.com/cheqs-magazine.html>

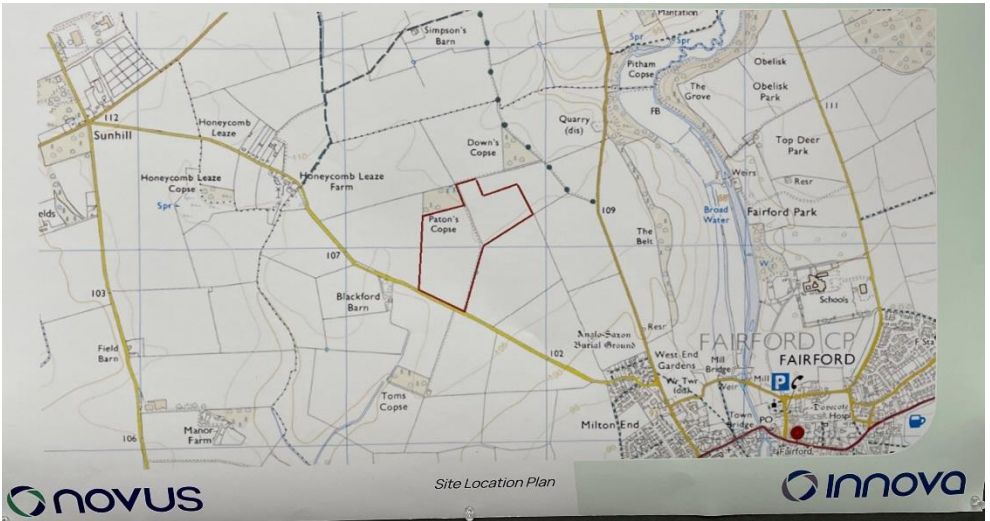
# SOLAR FARM PLANS FOR QUENINGTON-FAIRFORD BORDER



In response to the global challenge regarding climate change, the Government is aiming to de-carbonise the UK electricity grid by 2035. Other sources of electricity need to be used, and the sun’s energy, converted to electricity by solar panels, is one of the more obvious and easily achievable ways of doing this.

Last month, a Community Consultation Event was held at Fairford Community Centre. Novus, the company undertaking the building of the proposed solar farm on Ernest Cook Trust land (part of Milton Farm) gave information, and were happy to receive comments and questions about the planned project.

The meeting had not been very well-publicised in advance of it taking place, but the ten display boards were helpful in giving lots of information about the planned project, with both text and visual material such as maps and photographs. Members of the public could ask questions of those present from Novus, and were able to complete feedback forms at the end.



For those who were unable to attend – or did not know about the meeting - photos were taken of the information boards, to be made available on local Facebook pages, and the main points of information are available on the Novus website, where you can also follow the progress of the planning application process:

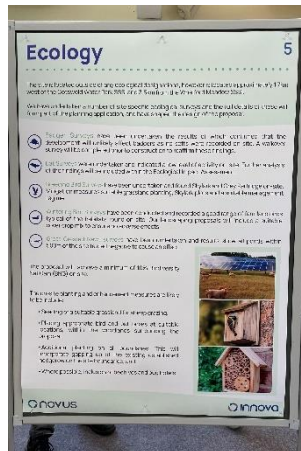
<https://www.novus-rs.co.uk/projects/welsh-way-solar-farm-project/>

## Information from the project planners

“Novus are proposing to construct a solar farm project at land adjacent to Welsh Way, near Fairford. Novus are working with The Ernest Cook Trust, as the landowners and in partnership with Innova Group, who will ultimately operate the solar farm. The site will be able to generate enough electricity to power 2,700 homes.

“The site has been carefully selected and designed through a detailed assessment process considering grid availability, heritage, landscape & amenity, ecology & environmental designations, access, and agricultural land quality. We have engaged a team of expert consultants to undertake site specific assessments which are currently in progress.

“We are keen to hear the local community’s feedback on our proposal. We are currently engaging with Cotswold District Council through their pre-application planning advice service, and we plan to submit our planning application in summer 2023.”



## Honeycombe Leaze

Of the CHEQS villages, Quenington will probably be the most affected by the plans, specifically the hamlet of Honeycombe Leaze. The increase in traffic, and in particular heavy vehicles, is likely to cause disruption, noise, and potential damage to the roads. The plan is for about four months of building work.

However, there may also be benefits to the solar farm, beyond the environmental ones. A community benefit fund will be established, to give money to the local community. Although the land for the project is within the boundary of Fairford, and therefore it is likely that Fairford would benefit most from the £3,000 or so per year in the fund, there could be a strong case for Quenington Parish Council receiving some of the funds, especially if there were any projects which would benefit the residents or environment of Honeycombe Leaze.

**ALL ADVERTISING ENQUIRIES: [cheqsmagads@gmail.com](mailto:cheqsmagads@gmail.com)**

<b>HOUSE &amp; GROUNDS</b>	
<b>Michael Rixon Building &amp; Roofing Ltd</b> building, roofing, Cotswold stone tiling etc. <a href="mailto:office@rixbuild.co.uk">office@rixbuild.co.uk</a>	01285 750517
<b>Keith Ford</b> garden work - pruning & hedge cutting, sheds re-felted etc.	01285 750406
<b>The Garden &amp; Plant Co.</b> design & landscaping <a href="mailto:info@gardenandplantco.com">info@gardenandplantco.com</a>	01285 712663
<b>A Tilling</b> decorating - interior and exterior	01285 810624
<b>Cotswold Oven Valeting Ltd</b> professional cleaning of ovens (incl. AGAs) hobs etc	01367 850522
<b>HEALTH &amp; WELL-BEING and FOOD</b>	
<b>Bowen Technique &amp; Reflexology</b> Southrop <a href="http://www.karenbenbow.co.uk">www.karenbenbow.co.uk</a>	07786 971041
<b>Dentist</b> Oliver Guy BDS (GDC reg 79562), Market Place Dental Practice, Cirencester: family dental care, cosmetic, whitening, implant restorations, clear braces etc.	01285 652200
<b>Sports Massage &amp; Injury Clinic, Bibury:</b> injuries, or sitting at a desk all day giving you sore shoulders, neck, back? Highly qualified sports therapist: <a href="http://sportstherapy.me">sportstherapy.me</a>	07870 604172
<b>Pasture-fed beef &amp; organic pork</b> - free CHEQS delivery <a href="http://www.sandyhillmob.co.uk">www.sandyhillmob.co.uk</a>	07890 853506

### NORMAN, TROTMAN & HUGHES

- Independent family business
- Albert Collins, experienced funeral director
- Offering a professional 24-hour personal service
- Golden Charter Funeral Plans



Walton House Barn, Northleach  
Cheltenham GL54 3HX  
[nthnorthleach@gmail.com](mailto:nthnorthleach@gmail.com)  
**01451 860288**



Designing and Remodelling Homes

Refurbishments, Listed Buildings & Extensions  
Kitchens & Bathrooms  
Specialist Adaptations

Andrew Coulter: 07727 659730  
[hello@acbcdesignandbuild.co.uk](mailto:hello@acbcdesignandbuild.co.uk)  
[www.acbcdesignandbuild.co.uk](http://www.acbcdesignandbuild.co.uk)  
Instagram: [acbcdesignandbuild](https://www.instagram.com/acbcdesignandbuild)

*The Help Group*

EXEMPLARY CARE  
AND HOME STAFFING  
SERVICES

*Your help at HOME*

CALL OUR FRIENDLY TEAM  
**01285 339050**

[WWW.THEHELPGROUP.CO.UK](http://WWW.THEHELPGROUP.CO.UK)



OFFERING QUALITY ASSISTANCE IN YOUR HOME  
WITH A SELECTION OF SERVICES INCLUDING:

- LIVE-IN CARE
- HOUSEKEEPING
- HOURLY CARE, HOME HELP & COMPANIONSHIP
- PRIVATE CHEFS

## Merryfield Farm

### Fresh Lamb Boxes

Quarter-Lamb (approx. 5kg) £50  
Half-Lamb (approx. 10kg) £85  
Whole Lamb (approx. 20kg) £160

delivery once a month  
around the 15<sup>th</sup>

contact Edward 07950137820  
edwardemerson@hotmail.com

All you need in  
swimming pools & hot tubs

Maintenance, cleaning, boilers,  
heat pumps, refurbs, liners, covers,  
chemicals & accessories

*16 Years experience within the swimming pool industry*



*Local family run business*



Call Dan 07596556953

pearldroppoolsandgardens@gmail.com

## BOB'S CHIMNEY CLEANING SERVICE

BCCS: Established 1994



Get in touch with Bob Painter if you  
need your chimney swept

01367 850486

07395 933418

Jud09p@gmail.com

## D J MORLEY

Interior & Exterior  
Painter & Decorator

OVER 30 YEARS EXPERIENCE

FREE ESTIMATES

contact on:

01285 713802

dcmorley@talktalk.net



## MOORE ALLEN & INNOCENT

Property Consultants  
and Managers,  
Land & Estate Agents,  
Auctioneers &  
Chartered Surveyors



*Here for the  
past, present  
and future*

01285 651831  
01367 252541

mooreallen.co.uk



## THE VICTORIA INN, EASTLEACH

01367 850277

www.thevictoriainneastleach.co.uk

enquiriesvictoriainneastleach@gmail.com



# Walking on Air

“Foot Care from the  
Comfort of your Home”

Foot Treatments include:

- Toe-nail Trimming
- Callus and Corns
- Ingrowing Toe-nails
- Fungal Infections
- Cracked and Dry Heels



Call Yvonne, Foot Health Practitioner, DipCFHP  
Tel: 07922 103532 (Fairford based)  
[www.walkingonairfoot-care.co.uk](http://www.walkingonairfoot-care.co.uk)

## THE KEEPERS ARMS, QUENINGTON



- FREEHOUSE
- 4 en-suite B&B rooms
- CAMRA Good Beer Guide
- Great Food and Champion Ales

[thekeepersarms.co.uk](http://thekeepersarms.co.uk)

01285 750 349

[landlord@thekeepersarms.co.uk](mailto:landlord@thekeepersarms.co.uk)



We treat your  
best friends as if  
they were our own

City &  
Guilds  
Qualified



Professional Dog Grooming



Ultra-Sonic Tooth Brushing



Puppy Pamper



Hand Stripping

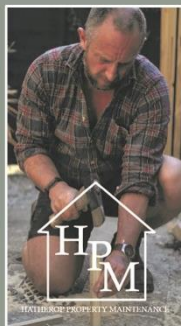


my best friend  
professional grooming

07702 041230

[clara@mybestfrienddoggrooming.co.uk](mailto:clara@mybestfrienddoggrooming.co.uk)

Magnolia Cottage, Lechlade Rd, Langford, GL7 3LA



- **Painting:** interior & exterior
- **Masonry:** ridge tile repair, re-pointing stone and mortar walls
- **Hard Landscaping:** patio, decking, fencing, woodsheds and pergolas
- **Carpentry:** 1<sup>st</sup> and 2<sup>nd</sup> fix, alcove cabinets, shelving, doors and floors
- **Bathroom and kitchen installations - plumbing and electrical services provided**

For all enquiries, please contact:  
Benjamin Round 07791 345750  
[HathropPropertyMaintenance@gmail.com](mailto:HathropPropertyMaintenance@gmail.com)



**Barking Mad**

- Home boarding with experienced host families in the Cotswolds
- Daily dog walking and collection
- House dog and pet sitting
- Dog training

01285 711 650 or 07770 887 950

[BarkingMad.uk.com](http://BarkingMad.uk.com)