

# CHEQS

# MAGAZINE



# May 2021

# NORMAN, TROTMAN & HUGHES



- Independent family business
- Albert Collins, experienced funeral director
- Offering a professional 24-hour personal service
- Golden Charter Funeral Plans

Walton House Barn, Northleach, Cheltenham GL54 3HX

[nthnorthleach@gmail.com](mailto:nthnorthleach@gmail.com)

**01451 860288**

## TRADITIONAL DRY STONE WALLING



- new walls, wall repairs and rebuilds
- retaining walls & mortared walls
- garden features & patios
- wall maintenance & ivy removal

**no job too small**

contact Joe: 07799877122

email: [info@cotswolddrystone.com](mailto:info@cotswolddrystone.com)

## THIS AD SPACE AVAILABLE IN FULL COLOUR



**£10 per month**

**Contact the editor**  
[cheqsmagads@gmail.com](mailto:cheqsmagads@gmail.com)

CHEQS Magazine is a free monthly community publication  
delivered by volunteers to about 800 homes in

Coln St Aldwyns, Hatherop, Eastleach, Quenington & Southrop.

**It is available online** (along with back copies) at [www.whichq.net/links.html](http://www.whichq.net/links.html)

## ADVERTISING

We are grateful to our advertisers for their support, which funds our printing.

To advertise in the magazine, contact [cheqsmagads@gmail.com](mailto:cheqsmagads@gmail.com)

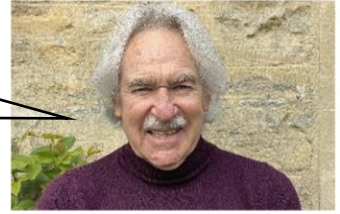
## EDITOR

Contributions (and corrections) are welcomed: they may be edited, and will be included at the editor's discretion. All items should include the name and contact details of the sender. Please send **by the 15<sup>th</sup> of the previous month** to the editor:

[cheqsmagazine@gmail.com](mailto:cheqsmagazine@gmail.com)

Margaret Stranks, 3 Old Orchard Court, Coneygar Road, Quenington  
01285 750402 or 07729 129578

*Hello from...  
... Alan Maynard*



My wife, Mandy, and I moved into The Old Post Office, in Hatherop about two years ago. I'm from Acton, west London and Mandy is from Newcastle on Tyne.



When I was somewhat younger, and still living in Acton, I formed a trad jazz band - that's me on banjo. But, a small challenge for you... do you recognise the trumpet player? He went on to play bass in one of the UK's most famous rock bands. The answer is given by the editor on page 6.

So how did Mandy & I end up here in the Cotswolds? My job involved a lot of travel... from Thailand to Texas and lots in between, including Newcastle, where I met Mandy over 30 years ago - we married and moved south.

We used to travel from our Berkshire home to Cirencester, Bibury, Broadway etc and fell in love with the Cotswolds. Our first move to the area was to a small cottage in Langford, where Sir Hardy Amies had a house and his sister a cottage - lots of goings on... but that's another story! Subsequently, we've lived in Quenington and Coln St. Aldwyns, and now Hatherop, where we've been made to feel so welcome.

We have between us two children, five grandchildren and now two great grandchildren, who we haven't even met yet, due to Covid restrictions.

If you don't know who we are, look out for two well wrapped up oldies (weather permitting), walking our daily five miles around the country lanes and footpaths, always on the lookout for deer, hare, buzzards and kites. There's plenty about just - keep your eyes open. My main hobby is fly fishing and collecting antique fishing tackle. I buy some from eBay and some from auctions. I also love cooking.

Mandy & I are both retired and love the quiet village life - healthy and relaxing, most of the time!

## EASING OUT OF LOCKDOWN

In recent months, the numbers of people with COVID-19 have been decreasing, and those who have been vaccinated increasing. The government's **Roadmap out of Lockdown** includes four stepped reductions in the national Covid restrictions.

**Step 1** saw the return of pupils and students to educational settings, and **outdoor** gatherings of up to 6 people or two households, including in private gardens. **Outdoor** sports facilities opened.

**Step 2** started last month, with the opening of non-essential retail, personal care and community centres, as well as outdoor visitor settings - zoos, farm parks etc. Hospitality venues can serve people seated and outdoors only. Organised children's groups can open, with limited numbers and Covid precautions.

**Step 3** is due to start no earlier than 17<sup>th</sup> May - a more risky step, and very dependent on the data showing that it is sensible:

- Outdoors, most social contact rules **may** be lifted - but no gatherings of over 30
- Outdoor performances (outdoor cinemas & theatres) **may** reopen
- Indoors, the rule of 6 or 2 households **may** still apply
- Indoor hospitality, entertainment venues such as cinemas and soft play areas, the rest of the accommodation sector, and indoor adult group sports and exercise classes **may** also reopen.
- Larger performances and sporting events in indoor venues **may** also be allowed (limited capacity), as may outdoor venues (limited capacity).
- Largest outdoor seated venues where crowds can be spread out **may** open.
- Up to 30 people **may** be able to attend weddings, receptions and wakes etc.

**Please check gov.uk for accurate and up-to-date information.**



## HOW TO COPE WITH EMERGING FROM LOCKDOWN

As more public venues open up and larger group gatherings are permitted, life will continue to be stressful for many people. Although we have been looking forward to this time, there are risks attached. Coming out of Covid restrictions may be as difficult as entering them was in the beginning, particularly for those who are vulnerable.

How we react to the relaxation of Covid rules will depend on our individual characters, our family or financial circumstances, our physical and mental health,

and on how those around us behave. Returning to the hustle and bustle of life, with noise, crowds and activity will be a joy to some but a trauma to others.

There is useful information on the Mental Health Foundation website: <https://www.mentalhealth.org.uk/coronavirus/looking-after-your-mental-health-we-come-out-lockdown> , but some key points to remember are:

- Return to places and activities at a pace which is right for you (within the rules!)
- Be patient with yourself and with those around you
- Think about what you want to return to, and what you might want to retain about the quieter 'lockdown life'
- Take things slowly if needs be, but do try to make progress, one step at a time
- Listen to other people, try to put yourself in their shoes, understand their point of view - try not to judge others without knowing their full story
- If you are anxious, try to explain that to people who may not realise it
- If people come too close, or behave in a way which is unhelpful, try to explain politely to them how their behaviour makes you feel
- Enjoy the new freedoms and relaxations, but be aware of those who are still vulnerable - Covid will not be going away quickly, and is still a deadly virus
- Be thankful for the key workers who still risk their own health
- Draw strength from things which lift your spirits and build you up
- If you need help, please find a friend, family member, organisation or someone in the community to confide in, and to assist you in getting the help you need
- And, of course, continue to follow the government guidance and Covid rules!



## THE COLN VALLEY MIXED DOUBLES OPEN TENNIS TOURNAMENT



Chedworth GL54 4NE

**Saturday, 26<sup>th</sup> June**

This long-established event raises funds for the club and the churches of Coln St Dennis, Coln Rogers and Chedworth.

A unique day of social and competitive tennis, played on delightful private courts kindly loaned for the day by residents in surrounding villages.

Coffee, lunch and tea is included in the entry ticket price of £30.

Early booking is advised as entries will be restricted this year so we can provide the correct safety measures: registration, briefings, lunch and tea will be held outside and the bar will be open.

**For full details and to enter**

**<https://clubspark.lta.org.uk/HillandValleyTC/Events>**

**Enquiries: [colnvalleytournament@gmail.com](mailto:colnvalleytournament@gmail.com)**

**Caroline Baker 07733 322176**

# NEWS FROM THE SCHOOLS

## Hatherop Church of England Primary School *Caring, Believing, Achieving*



*One of our Governors writes:* What a happy, busy time it was before the Easter break. The children were delighted to be with their friends and threw themselves into a full programme of lessons.

*Skylark* children learned about the properties of water, studiously exploring evaporation by measuring and recording the length of puddles in the playground. *Kingfisher* pupils studied the ancient Egyptians, making scarab beetles out of clay and drawing their own hieroglyphics! Year 4 have been learning how to use adjectives and adverbs, reading 'How to Train Your Dragon' for inspiration, which has resulted in some exciting and creative work. The oldest two years, *Red Kite*, have been exploring information about the Anglo Saxons.

The Christian value of the term was **compassion**, with the children talking about the importance of helping those in need, as the shepherd does in the Parable of the Lost Sheep. Rather than *give something* up for Lent, after a year of hard sacrifices, we focused on showing compassion to others. Seven children were nominated by their peers to receive compassion awards, including Heath, who cheered up a sad friend, and Henry, who was kind during games. Well done to Tilly, Henry, Katie, Heath, Jake, Larissa and Theo for setting good examples of how to live compassionately!



The term also saw eleven children producing beautiful entries for the Gloucestershire RE Art Competition. Chance to Shine cricket visited us and all classes learned new skills from coach Gareth. After-school club was well-attended and children were busy planting lots of bright, colourful flower pots to decorate our fences.

On Red Nose Day, the school was a very jolly-looking place, with children and staff wearing something red in aid of Comic Relief. Children competed in maths and physical challenges and thanks to their efforts £131 was raised!

School Council elections were held, during which the candidates gave brilliant speeches on their ideas for playtime. We are delighted to announce that Isabel, Rex, Amelia, Noah T, Ava and Balthazar have been elected. Congratulations to them!

On the last day of term two adult-sized Easter bunnies came to visit the school, distributing chocolate eggs kindly given by the Diocese of Gloucester and lots of laughs. Finally, huge thanks to Hatherop staff for their amazing efforts to keep the children learning and smiling during this tricky term.

## Southrop Church of England Primary School

*Together we can fly*



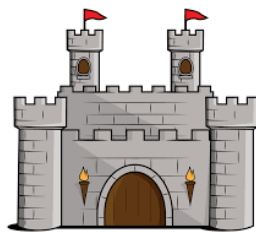
The end of term before Easter felt like a huge celebration of the school community being back together. Our school council had the great idea of a school football tournament, to include pupils and staff. Everyone, from the smallest Reception child to the oldest member of staff, gave the matches their very best, and a fabulous time was had by all. We were delighted to be able to end Term 4 with a visit from our much-missed Vicar, Andrew Cinnamond, leading our Easter worship, which took place in the playground. Every child had participated in creating an Easter garden and these were placed on the ground in front of them. The Year 5 & 6s entertained us with an Easter performance explaining the significance of hot-cross buns and Easter eggs.



In the Swan classroom the topic this term is the Maya. We will be comparing the Maya civilisation to that of the Anglo-Saxons, and the invasion by the Spanish with the Norman invasion of Britain. We will also be immersing ourselves in the culture, particularly the chocolate! But we will be having the Kitchen Club in to help us create some healthier Maya dishes as well. We are also

excited to have our first post-lockdown trip arranged, to the Pitt Rivers and Natural History Museums in Oxford.

In the Cygnet classroom the topic is Turrets and Tiaras. The children will be learning about kings and queens through British history, and about different types of castles. They will also be focusing on nursery rhymes and fairy tales. We are hoping to visit Sudley Castle. The Kitchen Club are starting off this topic with a feast set for kings and queens. The children will also be learning to play the ocarina!



We are looking forward to the prospect of getting out onto the field twice a week, hopefully in the sunshine, for more outdoor sports opportunities. In addition, we are keen for all our pupils to experience some alternative sports. Years 4, 5, and 6 will be off to Far Peaks, a climbing centre just outside Northleach, taking part in NICAS level 1 programme. Year 2 and 3 children will be completing 'Scooter Wise', a programme which helps children ride a scooter safely so that they can enjoy the freedom and fun. Scooters help improve coordination and enable children to learn how to balance using their weight. Reception and Year 1 will start Balanceability, a programme designed to help children gain the confidence and skills required to ride a pedal bike independently.

## QUENINGTON VILLAGE HALL 100 CLUB - APRIL WINNERS

1<sup>st</sup> Prize (£15) no. 45 - Derrick Daly    2<sup>nd</sup> Prize (£10) no. 17 - Christine Mace

### CONTACT THE EDITOR

Internet links are often used in CHEQS Magazine articles, as elsewhere, which can be very annoying if you happen not to use a computer or smart phone! If you would like to know more about a link, but have no internet access, please contact the editor, who will try to assist. Contact details are on the inside of the front cover.



By the way, the answer to Alan Maynard's question about the trumpet player in the photo is... Pete Entwistle, late of The Who, known to Alan as Ent (of course!), but later known as The Ox!

### RARE PLANT FAIR AT THE OLD RECTORY, QUENINGTON

**Sunday, 16<sup>th</sup> May: pre-booking ONLY**

The gardens of the Old Rectory, Quenington, will be opening to host a Rare Plant Fair on Sunday, 16<sup>th</sup> May 2021. A proportion of the proceeds from the event will be donated to **The Nelson Trust**, a charity that supports people whose lives have been affected by addiction, and to **ZANE**, a charity that supports a number of important projects in Zimbabwe.

Event catering will be by The Gilbertine Kitchen, from Cirencester. Hot drinks and cakes will be available on the day.

However, if you would like a picnic box, comprising either a Ploughman's Lunch or Frittata, you will need to **pre-order** at £5 each for collection on the day. Please contact the caterers directly via email at [gilbertinekitchen@icloud.com](mailto:gilbertinekitchen@icloud.com)

Entry is £5.50 per adult (children under 16 free) by **ADVANCED BOOKING ONLY** with hourly allocated slots from 11am to 4pm. To book, Google "rare plant fair, Quenington 2021" or use the link: <http://www.rareplantfair.co.uk/our-fairs/2021-the-old-rectory-quenington-nr-cirencester-may/>





# VILLAGE CONTACTS

## PARISH COUNCILS

### Coln St Aldwyns

Chair: David Hicks Beach 01285 750482

Clerk: Clare Brignall 01285 752662

[colnsaparishclerk@gmail.com](mailto:colnsaparishclerk@gmail.com)

### Hatherop

Chair: Bob Iles 01285 750729

Clerk: Jane Skinner 01285 712662

[jane\\_skinner928@yahoo.co.uk](mailto:jane_skinner928@yahoo.co.uk)

### Eastleach

Chair: VACANT

Clerk: Ann Tyldesley 01367 860130

[www.eastleachparishcouncil.org](http://www.eastleachparishcouncil.org)

[eastleachpc@btinternet.com](mailto:eastleachpc@btinternet.com)

### Quenington

Chair: Mike Scott 01285 750433

Clerk: Penny Ibbotson 01285 750000

[www.queningtonvillage.uk](http://www.queningtonvillage.uk)

[queningtonpc@gmail.com](mailto:queningtonpc@gmail.com)

### Southrop

Chair: Tim Guest 01367 850189

Clerk: Vanessa Lawrence 07876 252398

[www.southrop.org.uk](http://www.southrop.org.uk)

[sppclerk2017@outlook.com](mailto:sppclerk2017@outlook.com)

## VILLAGE HALLS

**Eastleach** Flo Dixon 01367 850641

[eastleachvhall@gmail.com](mailto:eastleachvhall@gmail.com)

**Quenington** [www.queningtonvillage.uk](http://www.queningtonvillage.uk)

[queningtonvillagehall@gmail.com](mailto:queningtonvillagehall@gmail.com)

**Southrop** Caroline Simmons 01367 850171

[southropvillagehall@gmail.com](mailto:southropvillagehall@gmail.com)

**Jubilee Field** Andy Howarth 01367 850400



## SCHOOLS

**Hatherop C/E Primary School** 01285 750318

Head, Taryn Hancock

**Southrop C/E Primary School** 01367 850246

Heads, Megan Davies & Julia McLellan

**Hatherop Castle School** 01285 750206

Head, Nigel Reed

## OTHER GROUPS (grey if not happening at the moment)

### S & E Friendship Circle

Jane Jenkinson 01367 850393 & Sally Parris 01367 850321

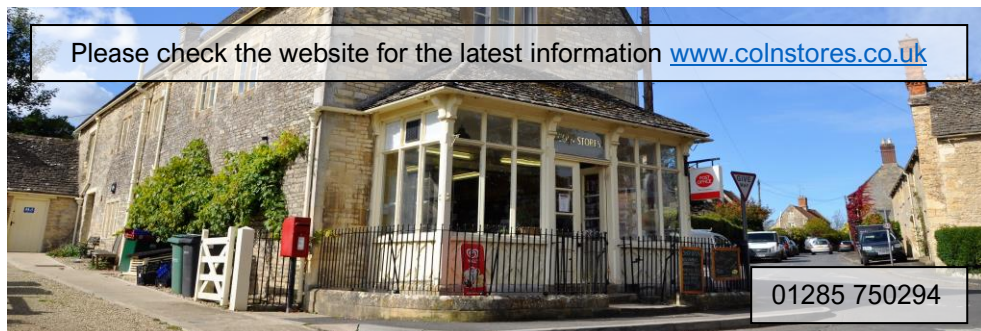
**Southrop Ladies** Beryl Whiteley 01367 850373

**Quenington Baby & Toddler Group (CHEQS+)** please pre-book

[margaret.stranks@gmail.com](mailto:margaret.stranks@gmail.com) 01285 750402 07729 129578

(WhatsApp preferred)

## COLN COMMUNITY STORES



	Shop	Café (takeaway)	Post Office
Monday - Friday	8am - 4.30pm	8am - 3.30pm	9am - 12pm & 2pm - 4pm
Saturday	8am - 2pm	8am - 1pm	CLOSED or 9am - 12pm (alt. weeks)
Sunday	9am - 1pm	9am - 12pm	CLOSED

### BANK HOLIDAY TIMES

Monday, 3<sup>rd</sup> May: Shop 9am - 2pm, Café 9am - 1pm, Post Office CLOSED

Monday, 31<sup>st</sup> May: Shop 9am - 2pm, Café 9am - 1pm, Post Office CLOSED

### SOUTHROP SHOP & POST OFFICE



Southrop Village Hall  
Shop & Post Office:



Wednesdays 9am to  
11.30am

See local publicity for any news of the  
Coffee Morning

Fresh sourdough bread available to order - call Helen on 01367 850047 by midday on Sunday at the latest.

### CHEQS DIARY

Thu 6 <sup>th</sup> May		local elections	p.14
Sun 16 <sup>th</sup> May	hourly slots	Rare Plant Fair - Old Rectory, Quenington PRE-BOOKING ONLY	p.6
13 <sup>th</sup> - 23 <sup>rd</sup> May		Thy Kingdome Come	p.11
Mon 24 <sup>th</sup> May	7.30pm	Quenington Annual Parish Meeting, village hall	p.13
Sat 26 <sup>th</sup> June		Coln Valley Mixed Doubles Open Tennis Tournament	p.3



## CHURCH SERVICES

Government guidelines and regulations may change. It is currently a government requirement that people at indoor church services must wear a face covering, in addition to having coronavirus prevention measures in place (social distancing, hand sanitising, no congregational singing indoors). Please be aware that you may need to book a place to allow distancing.

### Coln, Hatherop & Quenington

Service details for readers etc. are on the CHQ churches website: [www.chqchurches.net/](http://www.chqchurches.net/) Please let Val Trafford know if you plan to attend, so seating can be socially distanced: [valerie.trafford@btinternet.com](mailto:valerie.trafford@btinternet.com)

Sun 2 <sup>nd</sup> May 11am	Quenington - Holy Communion
Sun 9 <sup>th</sup> May 11am	Coln - Holy Communion
<b>*Thu 13<sup>th</sup> May 12.30pm</b>	<b>Hatherop - Ascension Day Prayer</b>
Sun 16 <sup>th</sup> May 11am	Quenington - Holy Communion
Sun 23 <sup>rd</sup> May 11am	Hatherop - Pentecost Communion
Sun 30 <sup>th</sup> May 11am	Coln - Holy Communion

**\*preceded by Ascension Day walk - meet 10am at Coln Stores**

### Eastleach

Eastleach will be holding services each Sunday, with Matins on the 1st, 3rd, and 4th Sundays and Holy Communion on the 2nd Sunday, all at 11.00am (5<sup>th</sup> Sundays Morning Prayer at 11am).

### Southrop

It is *hoped* to hold the following services - but do check local information. Please email the church warden if you are planning to attend, to allow for social distancing.

Sun 2 <sup>nd</sup> May	9.30am	Holy Communion
Sun 16 <sup>th</sup> May	6pm	Evensong

### Williamstrip Chapel

Mass is usually celebrated on Sundays at 9.30am

### Fairford Churches

For details of services in Fairford, please check notices boards and websites, or phone the church contact person.



FAITH · HOPE · LOVE

# CHURCH CONTACTS

## COLN ST ALDWYNS, HATHEROP & QUENINGTON CLERGY

Rev Simon Brignall The Vicarage, Church Lane, Coln St Aldwyns GL7 5AG  
(Thu, Fri, Sat, Sun) 01285 752662 [chqvicar@gmail.com](mailto:chqvicar@gmail.com)

## EASTLEACH & SOUTHPROP CLERGY

Rev Andrew Cinnamon The Vicarage, Sherborne Street, Lechlade GL7 3AH  
(day off Tuesday) 01367 253651 [vicar@stlawrencelechlade.org.uk](mailto:vicar@stlawrencelechlade.org.uk)  
Gordon Land 01367 252050 [walreader44@gmail.com](mailto:walreader44@gmail.com)  
(Lead Minister for Eastleach)

## C of E CHURCH WARDENS

CHQ Val Trafford 01285 750504  
Eastleach Tim Lawson 01367 850756 or 07855 264360 [timglawson@me.com](mailto:timglawson@me.com)  
Southrop Jerry Hibbert 07766 084051 [jerry@hibbertralph.com](mailto:jerry@hibbertralph.com)

## C of E SAFEGUARDING OFFICER

CHQ Edwina Hicks 07970 799270 [chqsafeguarding@gmail.com](mailto:chqsafeguarding@gmail.com)  
Eastleach Nicole Backhouse 07780 605717  
Southrop Rhona Reid 01367 850295

## C of E YOUTH WORKER

CHEQS & beyond Chris Saunders 07918 732040 [saundersc2014@gmail.com](mailto:saundersc2014@gmail.com)

## CATHOLIC PARISH PRIEST

Father Michael Robertson 01285 712586 [michael.robertson@cliftondiocese.com](mailto:michael.robertson@cliftondiocese.com)

## WILLIAMSTRIP CHAPEL CHAPLAIN

Rev J Felix Stephens OSB 01285 740374 [jfs.osb@ampleforth.org.uk](mailto:jfs.osb@ampleforth.org.uk)

## FAIRFORD UNITED CHURCH

Rev Wendy Tucker 01285 653655 Secretary: Rachel Emmerson 01451 844532

## OTHER INFORMATION

**HOSPITALS** Fairford: out-patients only 0300 421 6470 Cirencester 0300 421 6200

**SURGERIES** Hilary Cottage, Fairford 01285 712377 Lechlade Medical Centre 01367 252264

**GCC COMMUNITY WELL-BEING SERVICE** 01452 528491

**PHARMACIES** Boots, Fairford 01285 712350, Lechlade Pharmacy 01367 252285

**POLICE** non-emergency: phone 101 or email [101@gloucestershire.police.uk](mailto:101@gloucestershire.police.uk)

**Quenington Defibrillator** outside Quenington Village Hall for use by anyone in emergency.  
Trained volunteers available on **01285 610210** but ALWAYS RING 999 FIRST!

PLEASE LET THE EDITOR KNOW IF THIS NEEDS UPDATING (updated April 2021)

**Bus Service 76** Mon, Tue, Thu: Southrop 09:16, Eastleach 09:24, Hatherop 09:30, Quenington 09:37 to Fairford & Cirencester. Return leaves Cirencester at 12:40 and Fairford at 13:28. Sat: **S** 09:47, **E** 09:54, **H** 10:00, **Q** 10:07, **F** 10:15 Return leaves Ciren 14:20 Fairford 15:05

**Community Connexions Community Bus** book in advance on 03456 805029 for the door-to-door service on Thursdays to Cirencester; free with a bus pass or £8 each way.

## THY KINGDOM COME

Thy Kingdom Come is a global prayer movement that invites Christians around the world to pray for more people to come to know Jesus. What started in 2016 as an invitation from the Archbishops of Canterbury and York to the Church of England has grown into an international and ecumenical call to prayer.

The prayer initiative runs for the 11 days between Ascension and Pentecost (so this year it is 13<sup>th</sup> to 23<sup>rd</sup> May), and the South Cotswolds Team of churches is joining in. There will be morning and afternoon services of some kind in each of the 22 churches of the team in turn. Please check local church websites or publicity to find out more details.



If you would like to join in by praying at home, you can book a slot on the prayer sign-up sheet, to commit to spending an hour praying - for yourself, your family, neighbours, community, and the wider world. The link for the sign-up sheet is <https://bit.ly/SCTMtkc>. There is also a Thy Kingdom Come app with helpful ideas.

In addition to church services, there will be two separate hours for prayer as part of Thy Kingdom Come in the CHQ churches:

Saturday, 15<sup>th</sup> May 10 - 11am at Hatherop Church

Saturday, 22<sup>nd</sup> May 10 - 11am at Coln St Aldwyns

## LOCAL & COMMUNITY HISTORY MONTH

May has been designated as a month to raise the profile of local and community history. Some ways to find out more about the history of the CHEQS villages are:

### Quenington Archives

This collection of photographs, documents and written information can be made available for anyone to see during the monthly Quenington Village Hall Coffee Mornings (hopefully from June onwards), or by arrangement with the hall trustees.

### Southrop and Eastleach

The village websites have some very interesting and useful resources available to view. There is a wealth of information and history, with facts, photographs, maps and stories. <https://www.eastleach.org/> and <https://southrop.org.uk/>

### Facebook Group

If you are on Facebook, there are some wonderful reminiscences, photos and chat about 'the old days' in the group 'Memories of Hatherop, Southrop, and Quenington'.

## THE LONG TABLE MEALS

*Clare Brignall writes:* Thanks to the generosity of many people in the CHEQS area, members of the community were able to deliver 50 meals to local people as a way of thanking them for the sacrifices they have made in having to isolate over the last year. Some lovely thank you notes have been received. There are still some meals in the Coln vicarage freezer which anyone could request - either for themselves or for someone they know who might like a meal, and we plan on getting some more. Donations for any meals are entirely discretionary. Thank you very much to the people who cooked puddings, delivered meals, and to those who donated money to make it all happen.



**Friends of Fairford and Lechlade Communities**  
Formerly The League of Friends of Fairford Hospital

## ARRANGING VOLUNTARY PATIENT TRANSPORT

To request a driver for transport to and from appointments contact Friends of Fairford & Lechlade Communities direct:



**Telephone: 07540 798226 on Monday-Friday between 10am and 1pm**

If the line is busy, you will be able to leave a message and you will be called back. Or you can email [voluntarycarserviceof@gmail.com](mailto:voluntarycarserviceof@gmail.com)

## GENERAL MANAGER RECRUITMENT

The Trustees are seeking to appoint an enthusiastic and self-motivated General Manager to lead the charity, taking on the responsibility for delivering operational activities and fundraising. **Closing date for applications is 3<sup>rd</sup> May.**

This is a new role within the organisation and is an exciting opportunity for a professional to lead the charity organisation into its next phase of development. The General Manager will be working closely with the Trustees to maintain its health and wellbeing services within the local community and to expand its capacity and fundraising activities. We welcome applicants who are self-motivated, skilled and have the ability to build strong working relationships with trustees, staff and volunteers. Excellent communication skills are essential, as is experience of successful fundraising. Please see our website for an Application Pack and remuneration details: [www.friendsoffairford.org.uk](http://www.friendsoffairford.org.uk)

## NEWS FROM QUENINGTON PARISH COUNCIL

**Council Tax:** There was a need to increase the precept for Quenington Parish Council this year to start to build funds for replacing equipment in the playground, some of which is reaching the end of its natural life. This will be a major expenditure and the plan is to build up funds over a number of years rather than try to find the



cost all in one go; the Parish Council feels that it is important to invest in health and wellbeing, the significance of this has been highlighted during the pandemic. Quenington PC is always been mindful of keeping costs as low as possible and over the previous seven years the precept has only been increased by a total of £500, but it was felt necessary to have this recent increase to prepare for the future.

**Grass Cutting:** Following a suggestion to increase the ecological diversity of the village, a slight change in the grass cutting regime is being trialled. Three strips of grass are to be allowed to grow longer to encourage wildflowers and insects; these will then be cut back at the end of the summer to maintain a tidy appearance. Bulb planting is also planned to increase spring flowering. These wildflower strips are to be located in front of the hedge bordering Green View, in front of the hedge by the bus stop on the green and in the verge at the junction of Victoria and Church Road. As these areas develop, we would be interested in the views of residents, please email the clerk with any comments.

### **Annual Parish Meeting:**

The Government has confirmed that all Annual Parish Meetings should take place in 2021 and they should be held before 1<sup>st</sup> June.

Therefore, the Annual Quenington Parish Meeting will be held on **Monday 24<sup>th</sup> May at 7.30pm** in the village hall.



It will be a simpler event this year with no invited speakers but the chance to hear a review of the year from the Parish Council and an opportunity to ask questions. Covid rules will apply, of course, and it would be helpful if those planning to attend emailed the clerk [queningtonpc@gmail.com](mailto:queningtonpc@gmail.com) to let her know beforehand, so that seating can be organised as safely as possible. Masks will need to be worn (unless the rules have changed by then) and hand sanitiser will be available.

## COMMUNITY WELLBEING COORDINATOR

An opportunity has been developed for a Community Wellbeing Coordinator to make a real difference to people's lives in Fairford, Lechlade and the surrounding areas!

**Working for Wellbeing** is a new charity which has been created to support people's wellbeing in our local area. Whilst the focus will be to reduce isolation and assist those with mental health issues, it will also assist young people to find the help and activities they need. The charity will provide a service designed to ensure that everyone will have efficient access to the support and services they need to make their lives better.

**A motivated Community Wellbeing Coordinator** is now needed. Could it be you? This important role will require you to liaise with a wide variety of local and county-wide support organisations, volunteers and service users and be their key point of contact. You will also oversee the running (by volunteers) of our Community Cafes, website and telephone hotline.

**To be successful in this role** you should have at least two years' experience in community development and enjoy networking with key stakeholders in this sector. Whilst you will work from home, you will be required to travel to meet a vast range of people in local government and the charity sector who will be vital to the success of our mission. You will have excellent interpersonal skills as well as a clear understanding of the issues underpinning the needs for additional wellbeing support in our community.

**Your role will be part time** (20 hours a week) with a competitive salary (£23,088 per annum, pro rata) and you will be responsible to the Trustees who will provide both guidance and support.

We know this will provide a wonderful, inspiring challenge for someone who would like to build on the good work of many others – it is also an opportunity to create something special from the beginning. To apply, please send your CV with a covering message explaining why you are suitable for this role to [robertjohnread@me.com](mailto:robertjohnread@me.com)

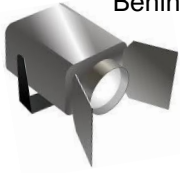
## ELECTIONS ON 6<sup>TH</sup> MAY

On Thursday, 6<sup>th</sup> May, elections will take place locally for the Gloucestershire Police and Crime Commissioner (Gloucestershire is one of 43 police areas, and each elect a Police and Crime Commissioner every four years), and for the Gloucestershire County Council. The Cotswold district comprises 8 electoral divisions, and one councillor will be elected for each division. Our division is Fairford & Lechlade-on-Thames.





## HIDDEN BUSINESSES



Behind the walls of some of our CHEQS residences, people are busy running small businesses.

This month we put the

**SPOTLIGHT ON...**

... Luigi De Paola



Having spent 10 years working in London managing a busy video studio for one of the Big Four - the world's four largest professional services networks - it was time to make our escape with our then toddler daughter. Where better to come back to than Gloucestershire, where both my wife MJ and I have family nearby?

We were lucky enough to come across Quenington (a fabulous secret) and have enjoyed living here for two years now - although we've been in the area for nearly six years.

After a while, the daily commute to London no longer felt like the right option for us so we set about working more with local businesses. We've really enjoyed the increased connection with the area that this has given us and it's definitely one of the things that's helped us to feel really at home here.

With 20 years' experience in video - supporting a diverse range of companies from FTSE 100, award winning architects, to fashion designers and YouTubers with millions of views - we now run a digital agency specialising in video production and visual branding.

The work we do is very varied and tailored to each client. It can involve anything from a 30-second video for a small business looking to increase their online presence to a large-scale video production with animation, motion graphics and stills photography. We can also professionally edit your existing content.

Video can really boost a company's business, and to know that I have played a part in that is very rewarding. That is especially so with local businesses, like Lynwood where I worked with Rob and Kat to create a video for their website, to help them tell their story.

If you are interested in having a chat about how video might work for you and your business, or if you want to talk through some ideas and see where it might go, then please email me [luigi@2wisted.co.uk](mailto:luigi@2wisted.co.uk) or give me a call on 07836 315031 - I'd be really happy to have a chat.

## PLEASE SUPPORT LOCAL BUSINESSES

<b>TO ADVERTISE OR MAKE AMENDMENTS: <a href="mailto:cheqsmagads@gmail.com">cheqsmagads@gmail.com</a></b>	
<b>HOUSE &amp; GROUNDS</b>	
<b>Corinium Security Systems</b> Your security is our priority. Intruder alarms, CCTV, gate automation. All works undertaken. <a href="mailto:James@coriniumsecuritysystems.com">James@coriniumsecuritysystems.com</a>	07551 387487
<b>Michael Rixon Building &amp; Roofing Ltd</b> building, roofing, Cotswold stone tiling etc. <a href="mailto:office@rixbuild.co.uk">office@rixbuild.co.uk</a>	01285 750517
<b>SN Complete Groundworks</b> drainage, driveways, fencing etc. 07738937697	01367 850717
<b>Keith Ford</b> garden work - pruning & hedge cutting, sheds re-felted etc.	01285 750406
<b>Ben Reynolds</b> tree surgery, landscaping, fencing <a href="mailto:info@bsrarb.co.uk">info@bsrarb.co.uk</a>	01285 750769
<b>The Garden &amp; Plant Co.</b> design & landscaping <a href="mailto:info@gardenandplantco.com">info@gardenandplantco.com</a>	01285 712663
<b>Coln Valley Glazing</b> Replacement of misted or broken glass units 07765 780772	01285 750553
<b>A Tilling</b> decorating - interior and exterior	01285 810624
<b>Will's Logs</b> seasoned, sustainable hardwood (oak, ash) firewood FREE LOCAL DELIVERY	07771 867767
<b>Cotswold Oven Valeting Ltd</b> professional cleaning of ovens (incl. AGAs) hobs etc	01367 850522
<b>Window Cleaning</b> commercial and domestic traditional window cleaning, also pressure washing and gutter cleaning. For more info: <a href="mailto:steve.rix@hotmail.co.uk">steve.rix@hotmail.co.uk</a>	01451 509049 07731 552250
<b>Handy Man</b> general property maintenance inc. carpentry & painting, inside & out	07791 345750
<b>Local mole control</b> Jay Lazenby <a href="mailto:jslgoneferreting@gmail.com">jslgoneferreting@gmail.com</a>	01367 850515
<b>HEALTH &amp; WELL-BEING</b>	
<b>Bowen Technique &amp; Reflexology</b> Southrop <a href="http://www.karenbenbow.co.uk">www.karenbenbow.co.uk</a>	07786 971041
<b>Unique Private Exercise Classes</b> with Heather - improve your flexibility, balance, core strength and energy using the disciplines of Iyengar Yoga, Qi Gong or Tai Chi	01285 750751
<b>Sports Massage &amp; Injury Clinic, Bibury:</b> injuries, or sitting at a desk all day giving you sore shoulders, neck, back? Highly qualified sports therapist: <a href="http://sportstherapy.me">sportstherapy.me</a>	07870 604172
<b>OTHER</b>	
<b>The Keepers Arms</b> Quenington, Jon & Michelle <a href="http://www.thekeepersarms.co.uk">www.thekeepersarms.co.uk</a>	01285 750349
<b>Computer Solutions</b> Iain Atkins, personal service for all your IT issues.	01285 750277
<b>Moore Allen &amp; Innocent</b> property consultants and managers, land & estate agents, auctioneers & chartered surveyors <a href="http://www.mooreallen.co.uk">www.mooreallen.co.uk</a>	01285 651831 01367 252541
<b>Dentist</b> Oliver Guy BDS (GDC reg 79562), Market Place Dental Practice, Cirencester: family dental care, cosmetic, whitening, implant restorations, clear braces etc.	01285 652200
<b>Pasture-fed beef &amp; organic pork</b> - free CHEQS delivery <a href="http://www.sandyhillmob.co.uk">www.sandyhillmob.co.uk</a>	07890 853506
<b>Printers of CHEQS Magazine:</b> <a href="mailto:info@busyfingersprinting.com">info@busyfingersprinting.com</a> Love Lane, Ciren.	01285 656757
<b>ANNUAL ADVERTISING RATES ARE:</b>	
£36 for SINGLE LINE (basic info only, about 70 characters), £60 for 2 LINES, £90 for 3 LINES	
£120 for approx. 6x6cms COLOUR BLOCK	
Back page colour blocks (from 2022) will be £150 for approx. 6x6cms, £300 for approx. 12x6cms	
ONE-OFF MONTH OR SHORT-TERM ADS AVAILABLE: please ask <a href="mailto:cheqsmagads@gmail.com">cheqsmagads@gmail.com</a>	
<b>IF YOU USE ONE OF THESE ADVERTISERS, PLEASE LET THEM KNOW THAT YOU FOUND THEIR DETAILS IN CHEQS MAGAZINE!</b>	

# Walking on Air

**“Foot Care from the  
Comfort of your Home”**

Foot Treatments include:

- Toe-nail Trimming
- Callus and Corns
- Ingrowing Toe-nails
- Fungal Infections
- Cracked and Dry Heels



Call Yvonne, Foot Health Practitioner, DipCFHP  
Tel: 07922 103532 (Fairford based)  
[www.walkingonairfoot-care.co.uk](http://www.walkingonairfoot-care.co.uk)



I cater for all your digital needs and offer a first-class service - before and after! I can supply PCs, Mac, laptops, printers, screens, software, wireless equipment, digital media, security, accessories and all other hardware.

- ✓ Your local expert for PC and Mac
- ✓ Computer repair & advice
- ✓ Virus removal & prevention
- ✓ Data recovery, backup & transfer
- ✓ Secure wireless networking & broadband installation
- ✓ On site & remote support offered
- ✓ Complete IT packages for personal & business clients

... Iain Atkins for all your digital needs  
Call me on 01285 750277  
or email [iain@computersolutions.me.uk](mailto:iain@computersolutions.me.uk)

## BOB'S CHIMNEY CLEANING SERVICE

BCCS: Established 1994



Get in touch with Bob Painter if you  
need your chimney swept  
01367 850486  
07395 933418  
[Jud09p@gmail.com](mailto:Jud09p@gmail.com)

## COTSWOLD LIME WORKS

Building conservation specialist based in  
Coln St Aldwyns



- Lime plastering/ rendering/ pointing
- Lath and plaster
- Limewashing

Contact Callum on 07944 746947

[Info@cotswoldlimework.co.uk](mailto:Info@cotswoldlimework.co.uk)  
[www.cotswoldlimeworks.co.uk](http://www.cotswoldlimeworks.co.uk)

## 2wisted Media Creative Video

*Bespoke videos for your business...*

- for social media and podcasts
- websites
- training
- testimonials
- branded content
- one-offs or monthly content

*“I can highly recommend Luigi. He created the perfect video for Lynwood, which allowed us to share our story.”* Rob (owner)

07836 315031 [luigi@2wisted.co.uk](mailto:luigi@2wisted.co.uk)  
[www.behance.net/uk2wisted](http://www.behance.net/uk2wisted)

## D J MORLEY

Interior & Exterior  
Painter & Decorator

OVER 30 YEARS EXPERIENCE

FREE ESTIMATES

contact on:

01285 713802

[dcmorley@talktalk.net](mailto:dcmorley@talktalk.net)



## TV Problems? Poor Picture?

Call **AARDVARK**   
**INSTALLATIONS**  
 website: [www.aardvarkinstallations.co.uk](http://www.aardvarkinstallations.co.uk)

- New TV Aerials • Freesat & Sky Installations
- Extra TV Points Fitted • Catch-up TV problems
- Set-up and Installation of Equipment
- Broadband, Wi-Fi & Networking • CCTV Installations



**01285 800 041** Email [aardvark@alpens.co.uk](mailto:aardvark@alpens.co.uk)



## TREE SURGERY & ARBORICULTURAL CONSULTANCY



For a free consultation & competitive quote, call 01285 750874

- Tree work complete to BS3998
- Hedge trimming and reducing
- Large tree dismantling
- Tree & hedge planting
- Fruit tree care & advice
- Stump removal
- Site clearance
- Tree health and safety reports
- BS5837 Reports
- Tree insurance reports
- Tree management plans
- Specialised in conservation areas & TPO consent
- Picus Tomograph System

NPTC QUALIFIED AND FULLY INSURED



OFFICE: 01285 750874  
 MOBILE: 07793 763535

[alasdair@ajarborists.co.uk](mailto:alasdair@ajarborists.co.uk)  
[ajarborists.co.uk](http://ajarborists.co.uk)



**HATHEROP  
 CASTLE**  
 THE ADVENTURE  
 OF CHILDHOOD

A leading independent Nursery and  
 Prep School for boys and girls from 2 - 13 years

Flexi, Weekly or Full boarding

Set in 20 beautiful acres in  
 Hatherop, near Cirencester GL7 3NB

For further information, please contact Samantha Kinch:

[admissions@hatheropcastle.co.uk](mailto:admissions@hatheropcastle.co.uk)

*The Cotswold Flyer - Free escorted train service to London & return for weekly boarders*

## THE VICTORIA INN, EASTLEACH

**01367 850277**

[www.thevictoriainneastleach.co.uk](http://www.thevictoriainneastleach.co.uk)

[enquiriesvictoriainneastleach@gmail.com](mailto:enquiriesvictoriainneastleach@gmail.com)



## Barking Mad

- Home boarding with experienced host families in the Cotswolds
- House dog and pet sitting
- Dog training

**01285 711 650 or 07770 887 950**

**[BarkingMad.uk.com](http://BarkingMad.uk.com)**