

CHEQS MAGAZINE



January 2021

VILLAGE CONTACTS

PARISH COUNCILS

Coln St Aldwyns	Chair: David Hicks Beach Clerk: Clare Brignall	01285 750482 01285 752662 colnsaparishclerk@gmail.com
Hatherop	Chair: Bob Iles Clerk: Jane Skinner	01285 750729 01285 712662 jane_skinner928@yahoo.co.uk
Eastleach	Chair: VACANT Clerk: Ann Tyldesley	www.eastleachparishcouncil.org 01367 860130 eastleachpc@btinternet.com
Quenington	Chair: Mike Scott Clerk: Penny Ibbotson	01285 750433 www.queningtonvillage.uk 01285 750000 queningtonpc@gmail.com
Southrop	Chair: Tim Guest Clerk: Vanessa Lawrence	01367 850189 www.southrop.org.uk 07876 252398 spcclerk2017@outlook.com

VILLAGE HALLS

Eastleach	eastleachvhall@gmail.com	Flo Dixon	01367 850641
Quenington	queningtonvillagehall@gmail.com	www.queningtonvillage.uk	
Southrop	southropvillagehall@gmail.com	Caroline Simmons	01367 850171
Jubilee Field		Andy Howarth	01367 850400

SCHOOLS

Hatherop C/E Primary School	01285 750318	Head: Taryn Hancock
Southrop C/E Primary School	01367 850246	Heads: Megan Davies & Julia McLellan
Hatherop Castle School	01285 750206	Head: Nigel Reed

OTHER GROUPS (in grey if not happening at the moment)

S & E Friendship Circle Jane Jenkinson 01367 850393 and Sally Parris 01367 850321

Southrop Ladies Beryl Whiteley 01367 850373

Quenington Baby & Toddler Group (CHEQS) please check if open, & pre-book due to COVID-19
margaret.stranks@gmail.com 01285 750402 or 07729 129578 (WhatsApp is preferred)

.....

CHEQS Magazine is a free monthly community publication, delivered by volunteers to about 800 homes in **Coln St Aldwyns, Hatherop, Eastleach, Quenington & Southrop.**

It is available online (along with back copies) at www.whichq.net/links.html

ADVERTISING: We are grateful to our advertisers for their support.

To advertise in the magazine, contact cheqsmagads@gmail.com

EDITOR: Contributions to the magazine are welcomed, but may be edited, and will be included at the editor's discretion. All items submitted for inclusion should include the name and contact details of the sender. Please send contributions or corrections

by the 15th of the previous month to the editor: cheqsmagazine@gmail.com

Margaret Stranks, 3 Old Orchard Court, Coneygar Road, Quenington
01285 750402 or 07729 129578



*Hello from...
... Margaret Stranks*

It's been a year since CHEQS Magazine became a community magazine - and what a year it's been! As we go into 2021, we may have hope that the vaccines against coronavirus will help reduce COVID-19, but life will not be returning to 'normal' for a while yet - and then there's Brexit to add into the mix!

January is thought to take its name from the Roman god Janus, whose two faces looked in opposite directions. He was the god of doorways, transitions, beginnings and endings. Although I'm not a great one for making New Year resolutions, I do think it's a good time to look back to take stock of things, and look forward to plan how we can make life better - for ourselves and those around us.

During the two periods of national lockdown, many people have had the opportunity to assess their lives and work out how to improve certain areas... or perhaps just to eat more cake or chocolate and drink more wine! There are many different ways to look at our lives: physical and mental health; knowledge & skills; money & possessions; spirituality; relationships; and the artistic and musical aspects of life. At whatever stage we are in life, it's always good to have times to reflect & plan - which areas of our lives do we want to improve, or perhaps take time to enjoy more?

Challenges can help us review. How do people cope when disaster strikes? What is our foundation and security? What really matters, in the end? If we can discover the answers to these questions, it can help keep some of life's difficulties in perspective.

As many of us have appreciated so often this year, we're so fortunate to live in such a beautiful part of the country. I think we are also blessed with a wonderful community of people, who are ready to help in time of need, and to rejoice together in times of celebration. I hope the magazine will continue to help us look at various aspects of life, and get to know our communities better. I'd like to say a huge 'thank you' to all those who support the production - especially those who faithfully deliver the magazines each month: you do an amazing job, and it is much appreciated!

VOLUNTEER HELP

If you need help with shopping, fetching medicines etc. contact the editor (01285 750402 or 07729 129578) if you are not sure who your village co-ordinator is.

Many people now have well-established links with people who can help out, but some requests for help are still being fulfilled by the teams of volunteers in the different villages. Thank you so much to all those who are willing to help in this way.

QUENINGTON VILLAGE HALL 100 CLUB - DECEMBER WINNERS

Last month, for our end-of-year 100 Club, we had a special 3-prize give away:

1st Prize (£20) no. 4 - Ray Sheldon

2nd Prize (£15) no. 63 - Jackie Cullum

3rd Prize (£8) no. 12 - Cindy Goddard

QUENINGTON VILLAGE HALL COFFEE MORNING

Saturday, 14th January from 10.30am to 11.45am



We hope to meet for drinks, cake and conversation (if permitted by COVID rules), so do come along and have a socially distanced chat! The Quenington Apple Day Recipe Book will be available, and can also be obtained from Coln



Community Stores - suggested donation £3. **If in Tier 2 or 3, we will NOT meet.**

THANKS TO...

... Hatherop Parish Council, for giving a donation of £100 to the CHEQS Magazine account. It costs £220 per month to print the 800 magazines we distribute, and we have slightly fewer advertisers at the moment, due to COVID-19 - but we do have the costs of two thirds of the year covered. If you run a business locally and would like to advertise in the magazine, it will be a great help - or if you could encourage any recommended businesses and trades people to do so.

ANNUAL ADVERTISING RATES ARE (pro rata if not for a full year):
£36 for SINGLE LINE (basic info only, about 70 characters)
£60 for 2 LINES
£90 for 3 LINES
£120 for approx. 6x6cms BLOCK or £180 for approx. 12x6cms BLOCK

For further information, email cheqsmagads@gmail.com

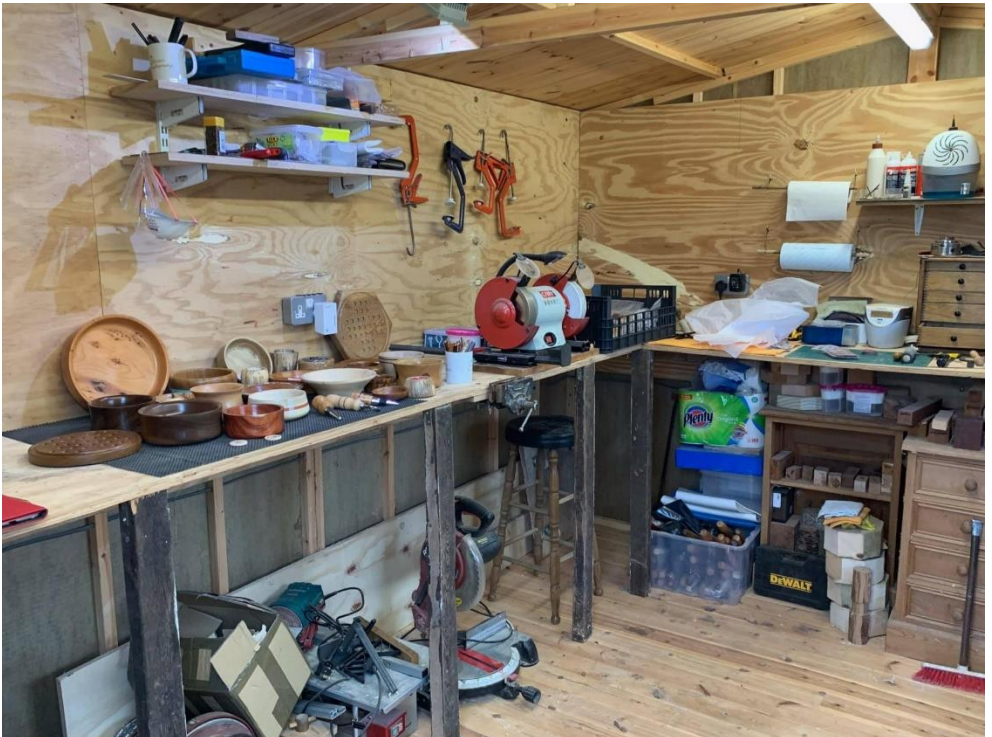
WHAT DID YOU LEARN IN 2020?

When the COVID-19 UK lockdown happened in spring last year, many people had to take time out from their 'normal' lives and change their daily routines. Once we got used to the strangeness and stress of it all, many of us achieved things we would never have had time for before lockdown. It would be interesting to share some of these experiences in the magazine. So, if you have a story about something you have achieved during the COVID-19 lockdowns, please contact the editor - details on inside front cover of the magazine. To start us off, here is Don Downes:

Never too old

Hi! I am Don - I was born and bred in the area, and I've lived in Quenington for over 20 years. I'm the vice chairman of Quenington parish council and, along with my wife Tracey, I run the Quenington car boot sales.

At Christmas 2019, I decided to semi-retire and do some of the things I couldn't do while working. Well, that never worked out quite as planned, as lockdown happened in March 2020, so all the plans had to be put on hold. Meanwhile, in my shed at the bottom of the garden sat my woodturning lathe. I'd bought it a while ago, meaning to get creative - but I never had the time to commit to it.

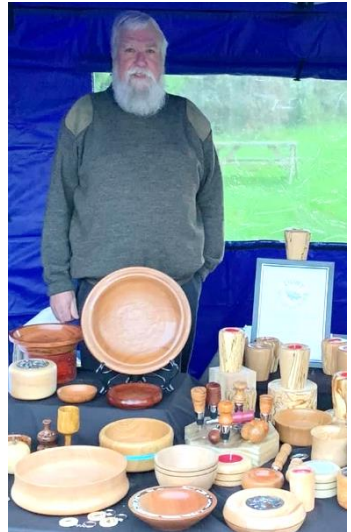


So, I started having a go - a total beginner. Some of the things I made at the start would make really good firewood, but then I watched some videos on YouTube, and managed to make something resembling a bowl.



Six months later, my spare room was full of bowls, candle holders, and pot-pourri pots. In October, I decided to be brave and start a Facebook page, Don's Woodturning. It produced lots of good comments and people asking if they could buy some of the items. I was quite nervous, as I wasn't sure if they were good enough.

I get most of the wood I use from Yandles Woodworking Centre, in Somerset. They not only sell timber, but also everything else you might need. It's always a treat to go and see what they've got, and stock up. I also have contacts in Derby and Scotland. I find if you use green wood it will crack or distort so I prefer to use dry, seasoned wood.



In December, I took the next step and booked a table at an outside craft fair in Lechlade and put my woodturning on show to the public - my first time ever doing anything like this and I was not very confident. But then people were stopping and asking questions about the different woods and techniques, and were surprised that I had only been turning since the spring. And people actually bought some of my items - so it was back to the shed to restock!





Check the government website for the latest information. The guidance may be updated at any time... **and, of course, any lockdown rules will be different!**

You can form a **support bubble** with another household if any of the following apply:

- you are the only adult in your household or are the only adult who does not have a disability that needs continuous care
- you have a child under 1
- you live with a child under 5 with a disability that needs continuous care

All businesses and venues that are open are expected to follow COVID-19 secure guidelines to protect customers, visitors and workers.

Find out which tier you are in, then check the following lists to find out what is, and is not, permitted (information from government posters - correct at time of printing).

WHAT YOU CAN DO IN THE DIFFERENT TIERS - IN BRIEF



MEETING FRIENDS AND FAMILY

Tier 1 Medium Alert: Maximum of six indoors or outdoors (unless single household or support bubble is larger than six)

Tier 2 High Alert: No mixing of households indoors apart from support bubbles. Maximum of six outdoors.

Tier 3 Very High Alert: No mixing of households indoors, or most outdoor places, apart from support bubbles. Maximum of six in some outdoor public spaces such as parks.



BARs, PUBS AND RESTAURANTS

Tier 1 Medium Alert: Venues must be table service only. They must stop taking orders at 10pm and must close by 11pm.

Tier 2 High Alert: Pubs & bars must close, unless operating as restaurants. Hospitality venues can only serve alcohol with substantial meals. Venues must stop taking orders at 10pm and must close by 11pm.

Tier 3 Very High Alert: Hospitality is closed, with the exception of sales by takeaway, drive-through or delivery.



RETAIL

All Tiers: Open.



WORK & BUSINESS

All Tiers: Everyone who can work from home should do so.



EDUCATION

All Tiers: Early Years settings, schools, colleges and universities open. Childcare, other supervised activities for children, and childcare bubbles permitted.



INDOOR LEISURE

Tier 1 Medium Alert: Open.

Tier 2 High Alert: Open.

Tier 3 Very High Alert: Open. Group activities and classes should not take place.



ACCOMMODATION

Tier 1 Medium Alert: Open.

Tier 2 High Alert: Open.

Tier 3 Very High Alert: Closed (with limited exceptions).



PERSONAL CARE

All Tiers: Open.



OVERNIGHT STAYS

Tier 1 Medium Alert: Permitted with household, support bubble or up to 6 people.

Tier 2 High Alert: Permitted with household or support bubble.

Tier 3 Very High Alert: We advise against overnight stays other than with household or support bubble.



WEDDINGS & FUNERALS

Tier 1 Medium Alert: 15 guests for weddings, civil partnerships, wedding receptions and wakes; 30 for funerals.

Tier 2 High Alert: 15 guests for weddings, civil partnerships, wedding receptions and wakes; 30 for funerals.

Tier 3 Very High Alert: 15 guests for weddings, civil partnerships, and wakes; 30 for funerals. Wedding receptions not permitted.



ENTERTAINMENT

Tier 1 Medium Alert: Open.

Tier 2 High Alert: Open.

Tier 3 Very High Alert: Indoor venues closed.



PLACES OF WORSHIP

Tier 1 Medium Alert: Open, but cannot interact with more than 6 people.

Tier 2 High Alert: Open, but cannot interact with anyone outside household or support bubble.

Tier 3 Very High Alert: Open, but cannot interact with anyone outside household or support bubble.



TRAVELLING

Tier 1 Medium Alert: Walk or cycle if possible, plan ahead and avoid busy times and routes on public transport. Avoid car sharing with those outside of your household or support bubble. Avoid travelling into a Tier 3 area, other than where necessary, such as for work or education. Further exemptions apply.

Tier 2 High Alert: Reduce the number of journeys you make, and walk or cycle if possible. Avoid busy times and routes on public transport. Avoid car sharing with those outside of your household or support bubble. Avoid travelling into a Tier 3 area, other than where necessary such as for work or education. Further exemptions apply.

Tier 3 Very High Alert: Avoid travelling outside your area, other than if necessary, such as for work or education. Further exemptions apply. Reduce the number of journeys where possible. Plan ahead and avoid busy times and routes on public transport. Avoid car sharing with those outside of your household or support bubble.



EXERCISE

Tier 1 Medium Alert: Classes and organised adult sport can take place outdoors, but must follow the rule of 6 indoors.

Tier 2 High Alert: Classes and organised adult sport can take place outdoors, but cannot take place indoors if there is any interaction between people from different households.

Tier 3 Very High Alert: Classes and organised adult sport can take place outdoors, but people should avoid higher-risk contact activity. Group exercise and sports indoors should not take place, unless with your household or bubble.

All Tiers: Organised activities for elite athletes, under-18s and disabled people can continue.



RESIDENTIAL CARE

All Tiers: COVID-secure arrangements such as substantial screens, visiting pods, and window visits. Outdoor/airtight visits only (rollout of rapid testing will enable indoor visits including contact).



LARGE EVENTS

Tier 1 Medium Alert: Sport, live performances and business meetings limited to 50% capacity or 4,000 people outdoors (whichever is lower) and 50% capacity or 1,000 people indoors (whichever is lower).

Tier 2 High Alert: Sport, live performances and business meetings limited to 50% capacity or 2,000 people outdoors (whichever is lower) and 50% capacity or 1,000 people indoors (whichever is lower).

Tier 3 Very High Alert: Events should not take place. Drive-in events permitted.

Find out what support you can get

For example, if you're out of work, need to get food, or want to take care of your mental health.

[gov.uk/coronavirus](https://www.gov.uk/coronavirus)

If you have any coronavirus symptoms:

A high temperature • A new, continuous cough
A loss of, or change to, your sense of smell or taste

Get a test and stay at home

For more information and detailed guidance visit:
[gov.uk/coronavirus](https://www.gov.uk/coronavirus)



Friends of **Fairford** and **Lechlade** Communities
Formerly The League of Friends of Fairford Hospital

CHANGES TO ARRANGING VOLUNTARY PATIENT TRANSPORT

How you request a driver for transport to and from appointments is changing: this will now be done directly through Friends of Fairford & Lechlade Communities - you will no longer need to request a driver through Hilary Cottage or Lechlade Medical Centre receptionists. If you require transport to and from your hospital/doctor/dental appointments please contact Friends of Fairford & Lechlade Communities:

Telephone 07540 798226 10am-1pm Monday-Friday (if the line is busy you can leave a message and a member of the patient transport team will call you back)

Email: voluntarycarservicelof@gmail.com

COLN COMMUNITY STORES



Please check the website for any late changes: www.colnstores.co.uk			
	Shop	Café (takeaway)	Post Office
Monday - Friday	8am - 4.30pm	8am - 3.30pm	9am - 12pm & 2pm - 4pm
Saturday	8am - 2pm	8am - 1pm	CLOSED
Sunday	9am - 1pm	9am - 12pm	CLOSED

NEW YEAR'S DAY - Friday, 1st January 2021 - ALL CLOSED

- only 3 customers at a time - social distancing while waiting to be served
- please keep your visit as brief as possible
- use the side door for takeaways (or wheelchair access)

The **Café @ Coln** is open (for takeaways) and the garden is open, but please:

- leave the tables where they are positioned
- return all chairs to original table when leaving
- dispose of all rubbish in the bins provided
- discuss any issues with a member of staff

SOUTHROP SHOP & POST OFFICE



The Post Office and shop:
Wednesdays, 9am to 11.30am
Southrop Village Hall.

Please see local publicity for any news about the Coffee Morning.

COTSWOLD DISTRICT COUNCIL - CLIMATE EMERGENCY



Cathy Brickley, one of the councillors on Southrop Parish Council writes:

With the recent memory of raging bushfires in Australia and California, information about the melting polar ice-caps (and the consequential rising sea levels), and the droughts and floods which the world experiences, it is clear to many people that the planet is being endangered by human activity and that urgent action is needed. We hear about **global** efforts to address climate change, and about the **UK government** deliberating over targets for the reduction of carbon emissions. But did you know that **Cotswold District Council** is taking the challenge very seriously too?

In 2018 CDC declared a Climate Emergency and Ecological Emergency and last year published an ambitious strategy, aiming to become a net-zero authority by 2045. Net-zero means achieving zero carbon emissions by balancing the amount of carbon produced and the amount taken out of the atmosphere, by such means as planting trees and various carbon capture and storage technologies. As an authority, they are looking at large scale projects: how to reduce emissions from their waste fleet, having an emphasis on ecologically sound planning and development, reducing energy demand across all council properties, and switching to green energy provision. However, this is only part of the story. They cannot realise their ambitious aims without mobilising the ‘grassroots’ across the district, i.e. ALL OF US!

With this in mind, CDC recently ran an all-day virtual conference for Parish and Town Councils in order to start the conversation and begin to generate ideas about what could actually be tackled at a local level. The notion of reducing carbon emissions is daunting, but there are simple things we as individuals can do to help:

- using compact fluorescent or LED light bulbs
- turning lights off when not in use
- switching to a renewable energy supplier
- shopping locally, and from local suppliers
- reducing plastic by refilling containers of household liquids and toiletries instead of always buying new (zero-waste shops can be found locally)
- reuse and repair as much as possible - as soon as COVID-19 restrictions are lifted, it is hoped that the planned monthly Repair Café will be able to get going in earnest, possibly rotating between the various CHEQS village halls: there are so many local people with skills and talents and what better way to use them than to help extend the useful life of broken items rather than consign them to landfill?



In the future, it is likely that government advice and grants will be made available to householders and landlords to assist with the installation of solar panels, lower carbon heating systems and retrofitting homes with better insulation and double glazing. Gloucestershire Highways are also carrying out a survey of best locations for the installation of charging points for electric vehicles.

In Southrop, the Parish Council is planting over 400 trees, donated by The Woodland Trust which, in time, should help to reduce the carbon footprint of this parish! Do share any other CHEQS action which we might all gain inspiration from.

NEWS FROM THE SCHOOLS

Hatherop Church of England Primary School *Caring, Believing, Achieving*



Towards the end of last term, the children were busy rehearsing enthusiastically for their Christmas performances, and were looking forward to the exciting visiting pantomime, and the other special events associated with Christmas. The children's performances were recorded in school: Skylark class presenting 'The Nativity 2020' (online, but no less amazing!), and Kingfisher and Red Kite class delighting their audiences with a selection of carols - which was sent to all the parents.

Please look at our website www.hatherop.gloucs.sch.uk to catch up with more of what has been happening in school, and to find out about what the children have been learning. You can see the class pages and a school tour - new additions to the site. Thank you to one of our parents, Chris Clayton, for helping us with this.

A reminder that the deadline for applications for admissions to Reception class 2021 is 15th January. Apply at www.gloucestershire.gov.uk/schooladmissions - you will receive confirmation of your application, and will be notified of the outcome on 16th April 2021. We look forward to a new set of children and families joining the Hatherop C/E Primary School community.

RESPITE OR LONG-TERM CARE IN EASTLEACH

Live with the family and
Ruby, our foxy red Labrador

For further details contact Trish Haynes
01367 850233
trish.haynes@btconnect.com

TINK, THE SOUTHROP HEDGEHOG RESCUE DOG

Jane Bere writes: About 18 years ago, I moved from Stanford-in-the-Vale to Southrop, along with Lucy, my Labrador-Collie. On her departure I began my adventure with terriers, and more specifically with Patterdales, a whole new ball game! I ended up with three dogs, Willow (a Jack Russell Terrier), Maddie (a small lurcher type), and Midget (my Patterdale), and spent most of my spare time going to agility competitions and training at Anthony Clarke's Lechlade K9 Centre.

I lost Midget in 2017 and was looking for a rescue Patterdale when Tink came into my life. However, I wouldn't be able to do agility with her due to a damaged hind leg.



She was originally a puppy farm breeding bitch, and while there she was stolen; but the thieves had been spotted by the owner, who had given chase. Tink was thrown out of the car and her hind leg was broken - sadly she never received any veterinary attention. She was then sold on to a gamekeeper, but she wasn't fit enough to work. Which was when I was approached to find out whether I would adopt her - which was a no brainer - who wouldn't want to?

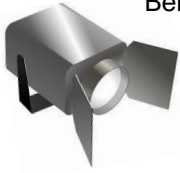
As Agility was not on the menu because of Tink's damaged back leg, I looked around for another avenue to channel her energies into, and came up with man-trailing. This involves training a dog to

search for a person who is hiding. The hidden person leaves a scented article which is specific to them. The dog then scents it, and is asked to find the owner. Tink has been enjoying this work over the years and doing pretty well, so I thought that perhaps I could use her skills to do something more productive locally - searching for underweight hedgehogs during the winter.



It has been quite successful so far and, thanks to help from residents in Southrop, our finds have been taken to Oak & Furrows Wildlife Rescue Centre. The hedgehogs will be coming back to this area once they have achieved the required weight to get them through hibernation - although maybe not until next spring. Oak & Furrows have managed to keep going during this very difficult time, and their doors are always open for injured or needy wild life. Last year they housed over 500 underweight hedgehogs! Any donations would be gratefully received by them: 01793 751412 www.oandf.co.uk

HIDDEN BUSINESSES

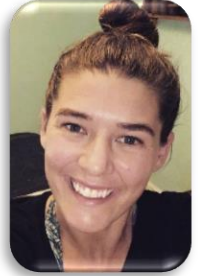


Behind the walls of some of our CHEQS residences, people are busy running small businesses.

This month we put the

SPOTLIGHT ON...

... Rhiannon Brown



I've lived in this area of the Cotswolds for most of my life, growing up in Whelford, and going to school in Fairford. Since having my little boy, Rémy, a couple of years ago, I've spent more time in Quenington as we love going to the toddler group in the village hall. When a house became available in Quenington, I jumped at the chance of moving here with Rémy and my partner, Chris.

I've worked in the fitness industry for 10 years, working as a fitness instructor and personal trainer in Cirencester before going on to complete a degree in Sports Studies at Southampton Solent University. After finishing university, I worked in an office for seven years and discovered the impact normal life, not just sport, can have on your body. So I decided to get a qualification in sports massage, and this is where my passion for massage therapy started. While I was pregnant with Rémy, I also discovered the joy of a pregnancy massage. After experiencing one myself, and realising how much it helped, I added pregnancy massage to my qualifications.

The main motivation for my passion in my work is the joy I get from helping people to feel better from their discomfort - whether it be from a sports injury, back pain from sitting down at work, or aches and pains from pregnancy. Stress also puts the body under a huge amount of strain and a relaxation massage is an excellent way to help alleviate this.

If you are interested in having a massage or just want to have a chat about how a massage might be able to help, please give me a call on 07718 087348 or email me: r.brown10@hotmail.co.uk



PLEASE SUPPORT LOCAL BUSINESSES

TO ADVERTISE OR MAKE AMENDMENTS: cheqsmagads@gmail.com	
HOUSE & GROUNDS	
Corinium Security Systems Your security is our priority. Intruder alarms, CCTV, gate automation. All works undertaken. James@coriniumsecuritysystems.com	07551 387487
Michael Rixon Building & Roofing Ltd building, roofing, Cotswold stone tiling etc. office@rixbuild.co.uk	01285 750517
SN Complete Groundworks drainage, driveways, fencing etc. 07738937697	01367 850717
Keith Ford garden work - pruning & hedge cutting, sheds re-felted etc.	01285 750406
Ben Reynolds tree surgery, landscaping, fencing bsrarborigculture@outlook.com	07802 567452
The Garden & Plant Co. design & landscaping info@gardenandplantco.com	01285 712663
Coln Valley Glazing Replacement of misted or broken glass units 0776 5780772	01285 750553
A Tilling decorating - interior and exterior	01285 810624
Will's Logs seasoned, sustainable hardwood (oak, ash) firewood <small>FREE LOCAL DELIVERY</small>	07771 867767
Cotswold Oven Valeting Ltd professional cleaning of ovens (incl. AGAs) hobs etc	01367 850522
Window Cleaning commercial and domestic traditional window cleaning, also pressure washing and gutter cleaning. For more info: steve.rix@hotmail.co.uk	01451 509049 07731 552250
Handy Man general property maintenance inc. carpentry & painting, inside & out	07791 345750
HEALTH & WELL-BEING	
Bowen Technique & Reflexology Southrop www.karenbenbow.co.uk	07786 971041
Unique Private Exercise Classes with Heather - improve your flexibility, balance, core strength and energy using the disciplines of Iyengar Yoga, Qi Gong or Tai Chi	01285 750751
OTHER	
The Keepers Arms Quenington, Jon & Michelle www.thekeepersarms.co.uk	01285 750349
Byeways Taxis and Private Hire local and long-distance bookings welcome, with vehicles to suit most occasions FREEPHONE 0800 999 2288	01451 844384
Computer Solutions Iain Atkins, personal service for all your IT issues.	01285 750277
Moore Allen & Innocent property consultants and managers, land & estate agents, auctioneers & chartered surveyors www.mooreallen.co.uk	01285 651831 01367 252541
Dentist Oliver Guy BDS (GDC reg 79562), Market Place Dental Practice, Cirencester: family dental care, cosmetic, whitening, implant restorations, clear braces etc.	01285 652200
Pasture-fed beef & organic pork - free CHEQS delivery www.sandyhillmob.co.uk	07890 853506
ANNUAL ADVERTISING RATES ARE:	
£36 for SINGLE LINE (basic info only, about 70 characters), £60 for 2 LINES, £90 for 3 LINES	
£120 for approx. 6x6cms BLOCK or £240 for approx. 12x6cms BLOCK	
Back page colour blocks (from 2022) will be £150 for approx. 6x6cms, £300 for approx. 12x6cms	
ONE-OFF MONTH OR SHORT-TERM ADS AVAILABLE: please ask cheqsmagads@gmail.com	
IF YOU USE ONE OF THESE ADVERTISERS, PLEASE LET THEM KNOW THAT YOU FOUND THEIR DETAILS IN CHEQS MAGAZINE!	

NORMAN, TROTMAN & HUGHES



- Independent family business
- Albert Collins, experienced funeral director
- Offering a professional 24-hour personal service
- Golden Charter Funeral Plans

Walton House Barn, Northleach, Cheltenham GL54 3HX

nthnorthleach@gmail.com

01451 860288



FARMER GEORGE'S WELL-ROTTED HORSE MANURE

Farmer George is selling very well-rotted horse manure, and will deliver within 10 miles of Southrop. The loads are approximately 1.5 tonnes.

**THERE IS NO BETTER FERTILISER
FOR YOUR GARDEN!**

Contact George Ponsonby on
07970 692292

or
george@ponsonbyfarms.co.uk

**THIS SPACE IS AVAILABLE
FOR £10 PER MONTH**

CONTACT

cheqsmagads@gmail.com

TO BOOK YOUR ADVERT

OR CALL THE EDITOR ON

01285 750402

07729 129578

Walking on Air

***"Foot Care from the
Comfort of your Home"***

Foot Treatments include:

- Toe-nail Trimming
- Callus and Corns
- Ingrowing Toe-nails
- Fungal Infections
- Cracked and Dry Heels



Call **Yvonne**, Foot Health Practitioner, DipCFHP
Tel: **07922 103532** (Fairford based)
www.walkingonairfoot-care.co.uk



I cater for all your digital needs and offer a first-class service - before and after! I can supply PCs, Mac, laptops, printers, screens, software, wireless equipment, digital media, security, accessories and all other hardware.

- ✓ Your local expert for PC and Mac
- ✓ Computer repair & advice
- ✓ Virus removal & prevention
- ✓ Data recovery, backup & transfer
- ✓ Secure wireless networking & broadband installation
- ✓ On site & remote support offered
- ✓ Complete IT packages for personal & business clients

... Iain Atkins for all your digital needs
Call me on 01285 750277
or email iain@computersolutions.me.uk



CHURCH SERVICES

It is currently a government requirement that **people at indoor church services must wear a face covering**, in addition to having coronavirus prevention measures in place (**social distancing, hand sanitising, no congregational singing**).

Government guidelines and regulations may change.

ANGLICAN SERVICES

MP=Morning Prayer, HC=Holy Communion, EP=Evening Prayer

Coln, Hatherop & Quenington

Service details for readers etc. are on the CHQ churches website:
<https://www.chqchurches.net/>

Sunday, 3rd January

11am HC Coln St Aldwyns 4pm EP Quenington

Sunday, 10th January

11am HC Quenington

Sunday, 17th January

8.30am HC Hatherop 11am HC Coln St Aldwyns

Sunday, 24th January

11am HC Quenington 4pm EP Coln

Sunday, 31st January

11am Family Service - Hatherop Church

Southrop:

Please look out for local publicity about any services which may be taking place.

Eastleach:

Please look out for local publicity about any services which may be taking place.

WORSHIP AT HOME

Services and the shorter 'devotionals' can still be found at:

<https://worship-at-home.weebly.com/>

WILLIAMSTRIP CHAPEL

Mass is celebrated on Sundays at 9.30am

FAIRFORD CHURCHES

For details of services in Fairford, please check notices boards and websites, or phone the church contact person.

VILLAGE CONTACTS

CHURCH of ENGLAND CLERGY

Coln St Aldwyns, Hatherop & Quenington:

Rev Simon Brignall The Vicarage, Church Lane, Coln St Aldwyns GL7 5AG
(*Thu, Fri, Sat, Sun*) 01285 752662 chqvicar@gmail.com

Rev Roger Scoones 3 Warwick Close, Fairford GL7 4LR
(*honorary*) 01285 711864 roger.scoones@icloud.com

Eastleach & Southrop

Rev Andrew Cinnamond The Vicarage, Sherborne Street, Lechlade GL7 3AH
(*day off Tuesday*) 01367 253651 vicar@stlawrencelechlade.org.uk

Gordon Land (*Lead Minister for Eastleach*) 01367 252050 walreader44@gmail.com

C of E CHURCH WARDENS

Coln St Aldwyns Val Trafford 01285 750504

Hatherop Val Trafford 01285 750504

Eastleach Tim Lawson 01367 850756 07855 264360 timglawson@me.com

Quenington Val Trafford 01285 750504

Southrop Jerry Hibbert 07766 084051 jerry@hibbertralph.com

C of E SAFEGUARDING OFFICER

CHQ Edwina Hicks 07970 799270 chqsafeguarding@gmail.com

Eastleach Nicole Backhouse 07780 605717

Southrop Rhona Reid 01367 850295

C of E YOUTH WORKER

CHEQS & beyond Chris Saunders 07918 732040 saundersc2014@gmail.com

CATHOLIC PARISH PRIEST

Father Michael Robertson 01285 712586 michael.robertson@cliftondiocese.com

WILLIAMSTRIP CHAPEL CHAPLAIN

Rev J Felix Stephens OSB 01285 740374 jfs.osb@ampleforth.org.uk

FAIRFORD UNITED CHURCH

Rev Wendy Tucker 01285 653655 Secretary, Stuart Emmerson 01451 844532

HOSPITALS Fairford: out-patients only 0300 421 6470 Cirencester 0300 421 6200

SURGERIES Hilary Cottage, Fairford 01285 712377 Lechlade Medical Centre 01367 252264

GCC COMMUNITY WELL-BEING SERVICE 01452 528491

PHARMACIES Boots, Fairford 01285 712350, Lechlade Pharmacy 01367 252285

POLICE non-emergency: phone 101 or email 101@gloucestershire.police.uk

Quenington Defibrillator outside Quenington Village Hall for use by anyone in emergency.
Trained volunteers available on **01285 610210** but ALWAYS RING 999 FIRST!

Bus Service 76 Mon, Tue, Thu, Sat: Southrop 09:42, Eastleach 09:50, Hatherop 09:56, Coln 09:59, Quenington 10:02, to Fairford & Cirencester. The return service leaves Cirencester at 13:50 and Fairford at 14:33.

Community Connexions Community Bus book in advance on 03456 805029 for the door-to-door service on Thursdays to Cirencester; free with a bus pass or £8 each way.

TV Problems? Poor Picture?

Call **AARDVARK** 
INSTALLATIONS
website: www.aardvarkinstallations.co.uk

- New TV Aerials • Freesat & Sky Installations
- Extra TV Points Fitted • Catch-up TV problems
- Set-up and Installation of Equipment
- Broadband, Wi-Fi & Networking • CCTV Installations



01285 800 041 Email aardvark@alpens.co.uk



TREE SURGERY & ARBORICULTURAL CONSULTANCY



For a free consultation & competitive quote, call 01285 750874

- Tree work complete to BS3998
- Stump removal
- Tree management plans
- Hedge trimming and reducing
- Site clearance
- Specialised in conservation areas & TPO consent
- Large tree dismantling
- Tree health and safety reports
- Picus Tomograph System
- Tree & hedge planting
- B55837 Reports
- Tree insurance reports
- Fruit tree care & advice

NPTC QUALIFIED AND FULLY INSURED



OFFICE: 01285 750874
MOBILE: 07793 763535

alasdair@ajarborists.co.uk
ajarborists.co.uk



Aj arborists
caring for your trees



**HATHEROP
CASTLE**
THE ADVENTURE
OF CHILDHOOD

A leading independent Nursery and
Prep School for boys and girls from 2 - 13 years

Flexi, Weekly or Full boarding

Set in 20 beautiful acres in
Hatherop, near Cirencester GL7 3NB

For further information, please contact Samantha Kinch:

admissions@hatheropcastle.co.uk

The Cotswold Flyer - Free escorted train service to London & return for weekly boarders

THE VICTORIA INN, EASTLEACH 01367 850277

www.thevictoriainneastleach.co.uk
enquiriesvictoriainneastleach@gmail.com



Barking Mad

- Home boarding with experienced host families in the Cotswolds
- House dog and pet sitting
- Dog training

01285 711 650 or 07770 887 950

BarkingMad.uk.com